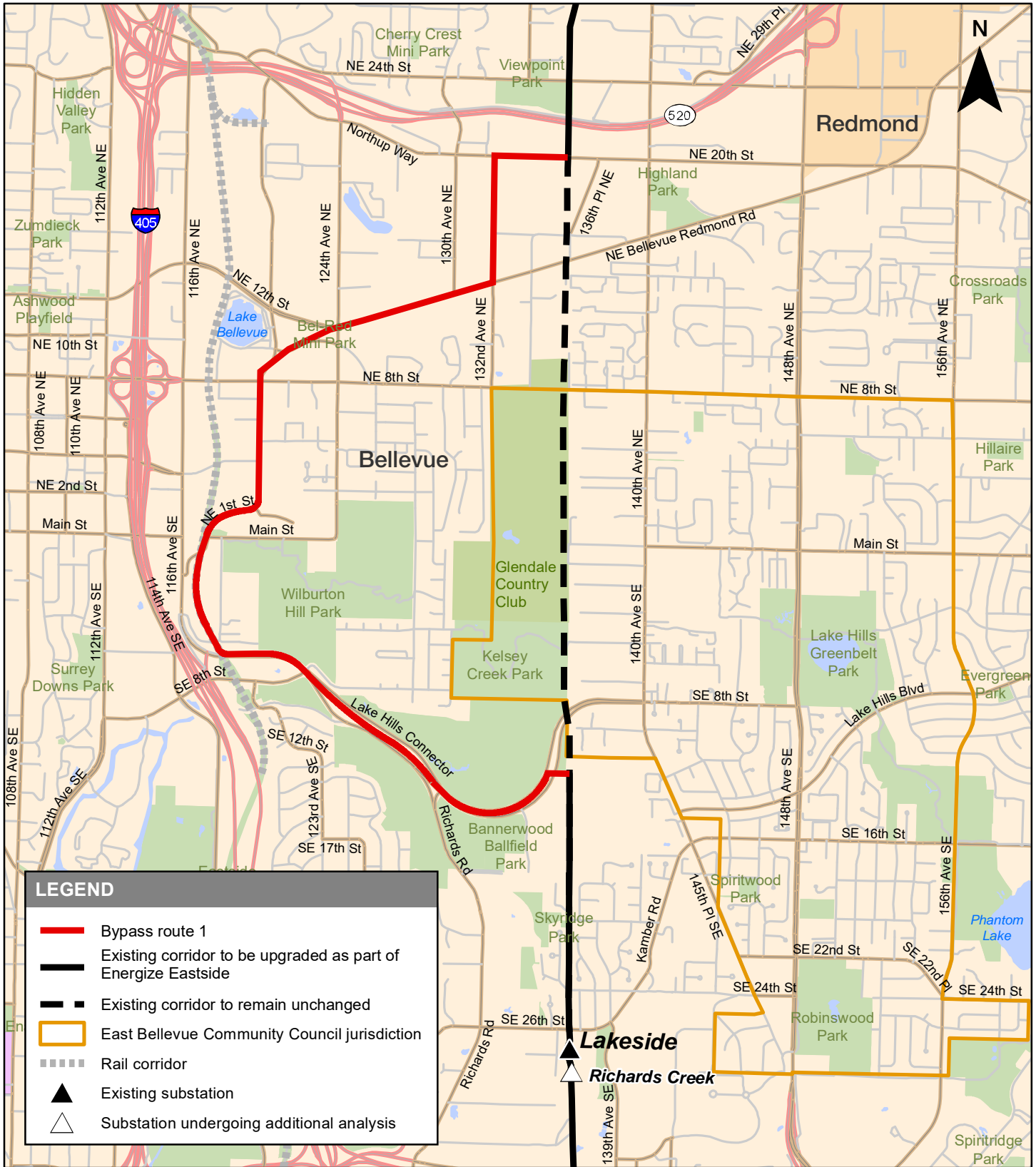


# East Bellevue Community Council bypass route 1



**energizeEASTSIDE**



**Note:** PSE prefers to use the existing corridor; our preferred route, Willow 2, reflects this value. The East Bellevue Community Council bypass routes were developed to reduce permitting risk to the project. For more detail about the routes, visit [pse.com/energizeeastside](http://pse.com/energizeeastside). Map is for illustrative purposes only.

Revised July 2016