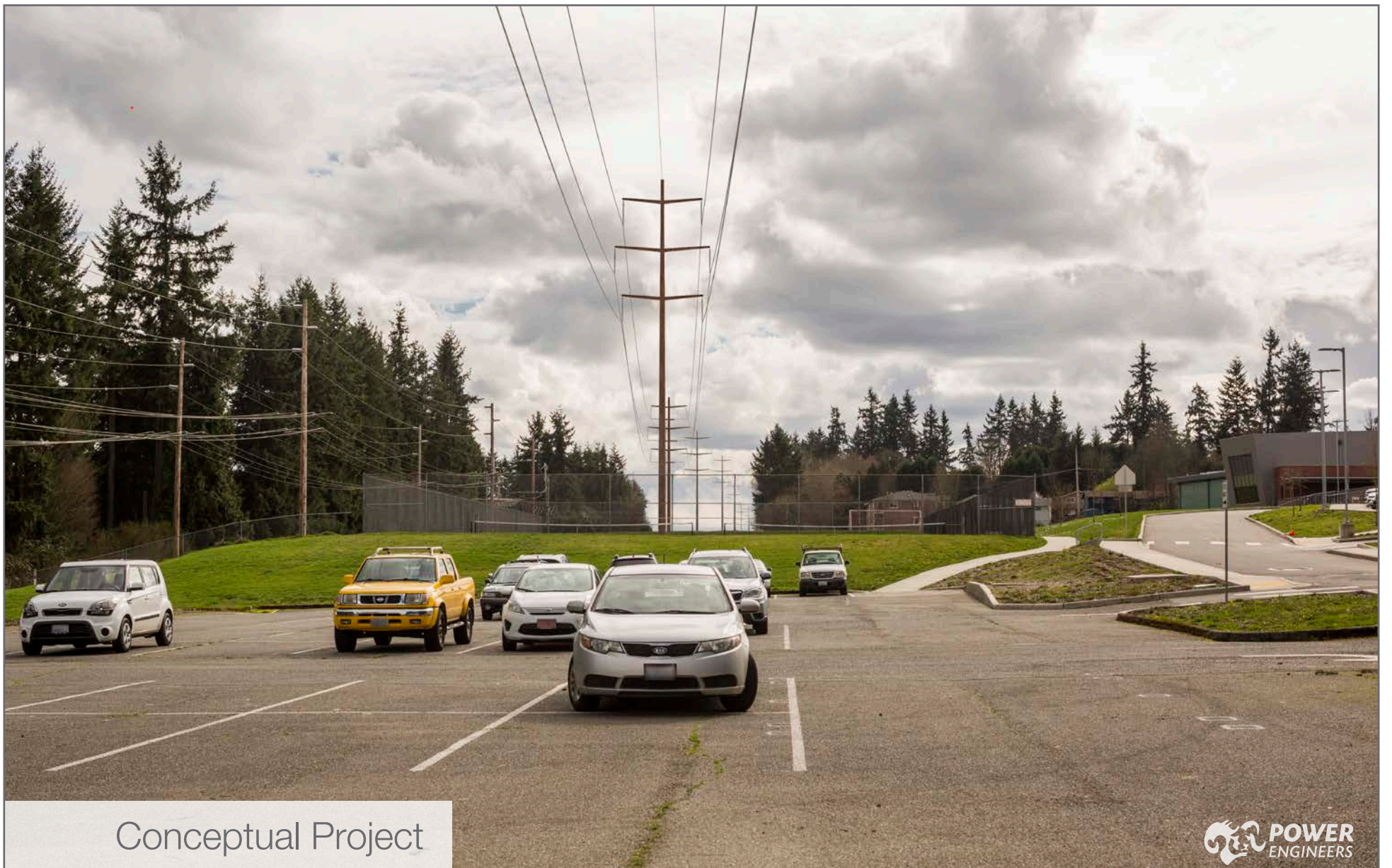


Existing Conditions



Conceptual Project



Photo simulations are for discussion purposes only and may change pending public, regulatory and utility review

3/16/2016

Address	13505 NE 75th St, Redmond
Date	3/8/2016
Time	2:41 PM
Viewing Direction	South
Existing Pole Heights	~75 feet
Proposed Pole Heights	~110 feet

KOP NORTH 14 SEGMENT 1