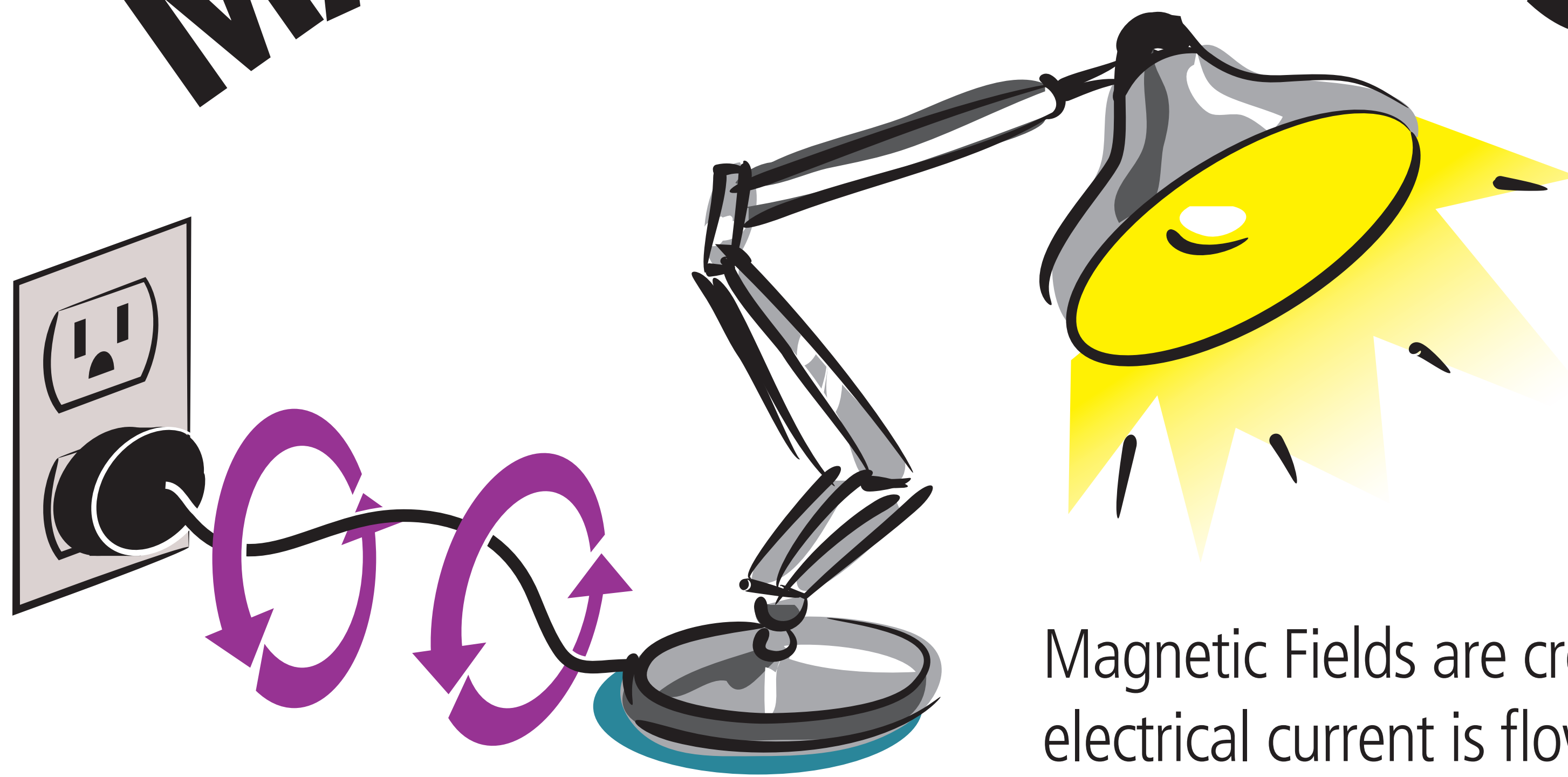


What Are MAGNETIC FIELDS?

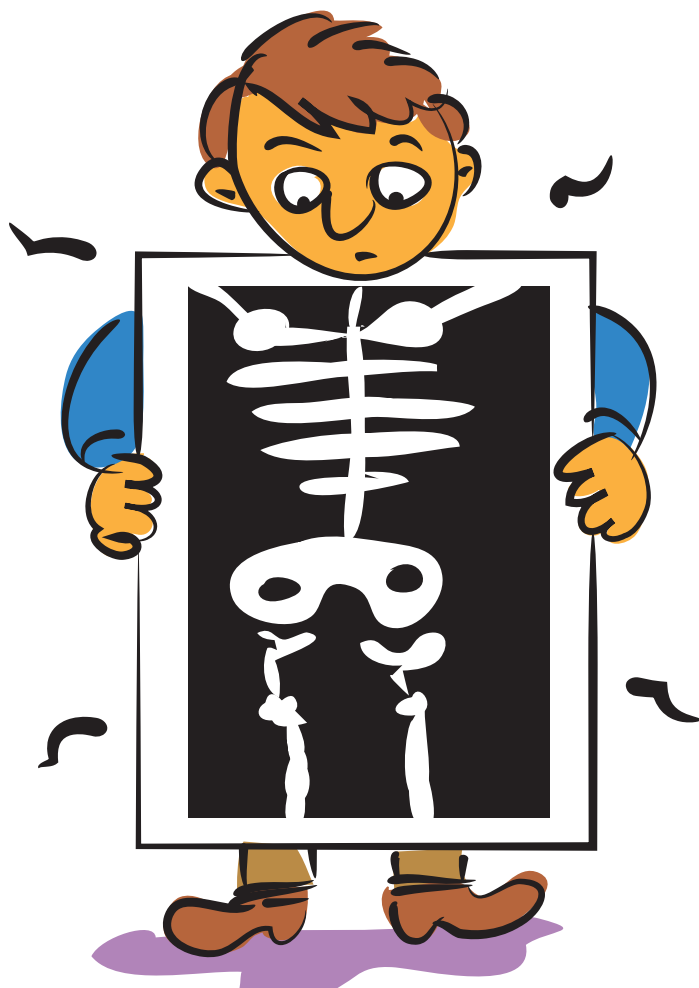


Magnetic Fields are created when electrical current is flowing.

What are they NOT?



Ultraviolet

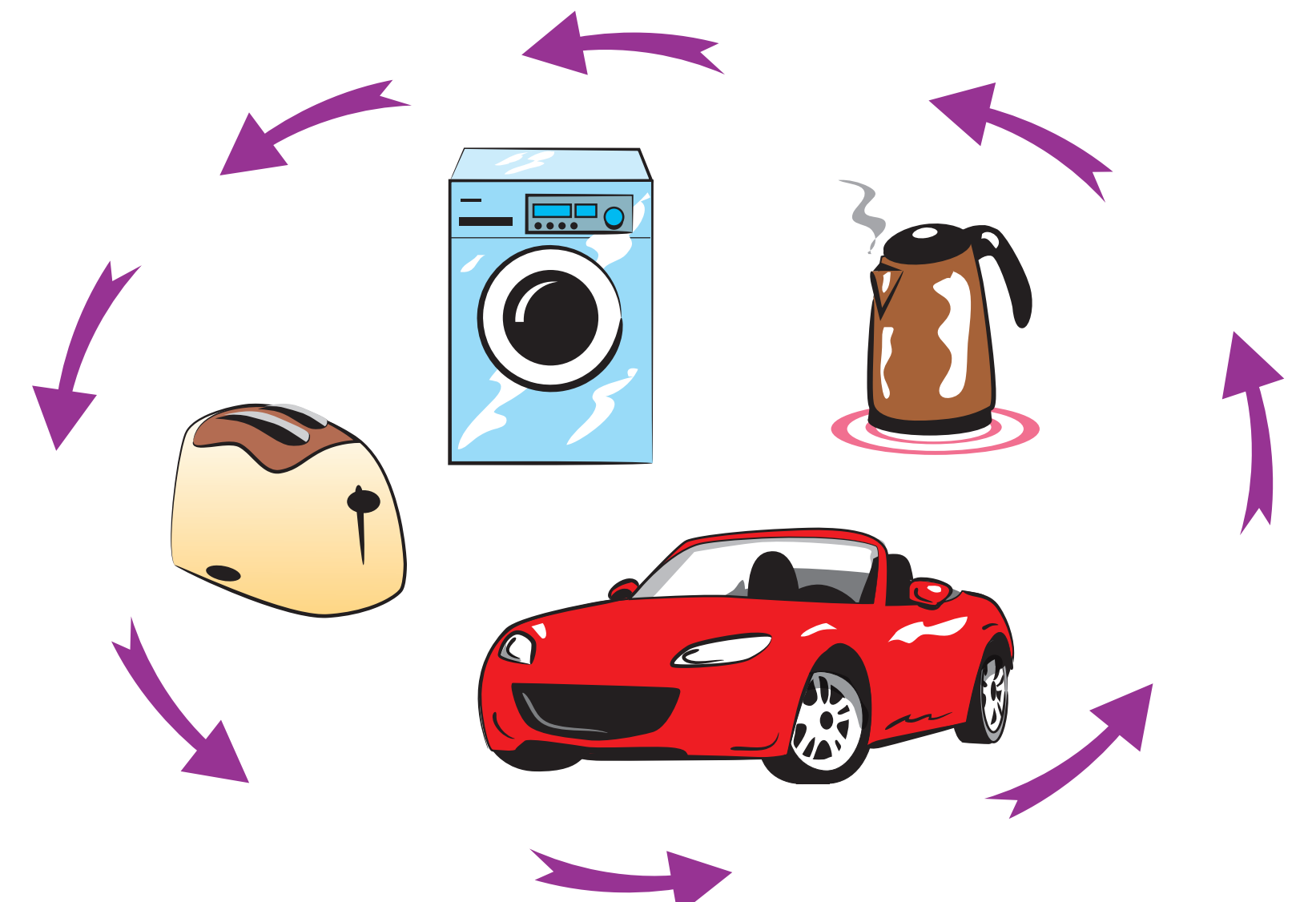


X-Rays



Gamma Rays

WHERE are they?

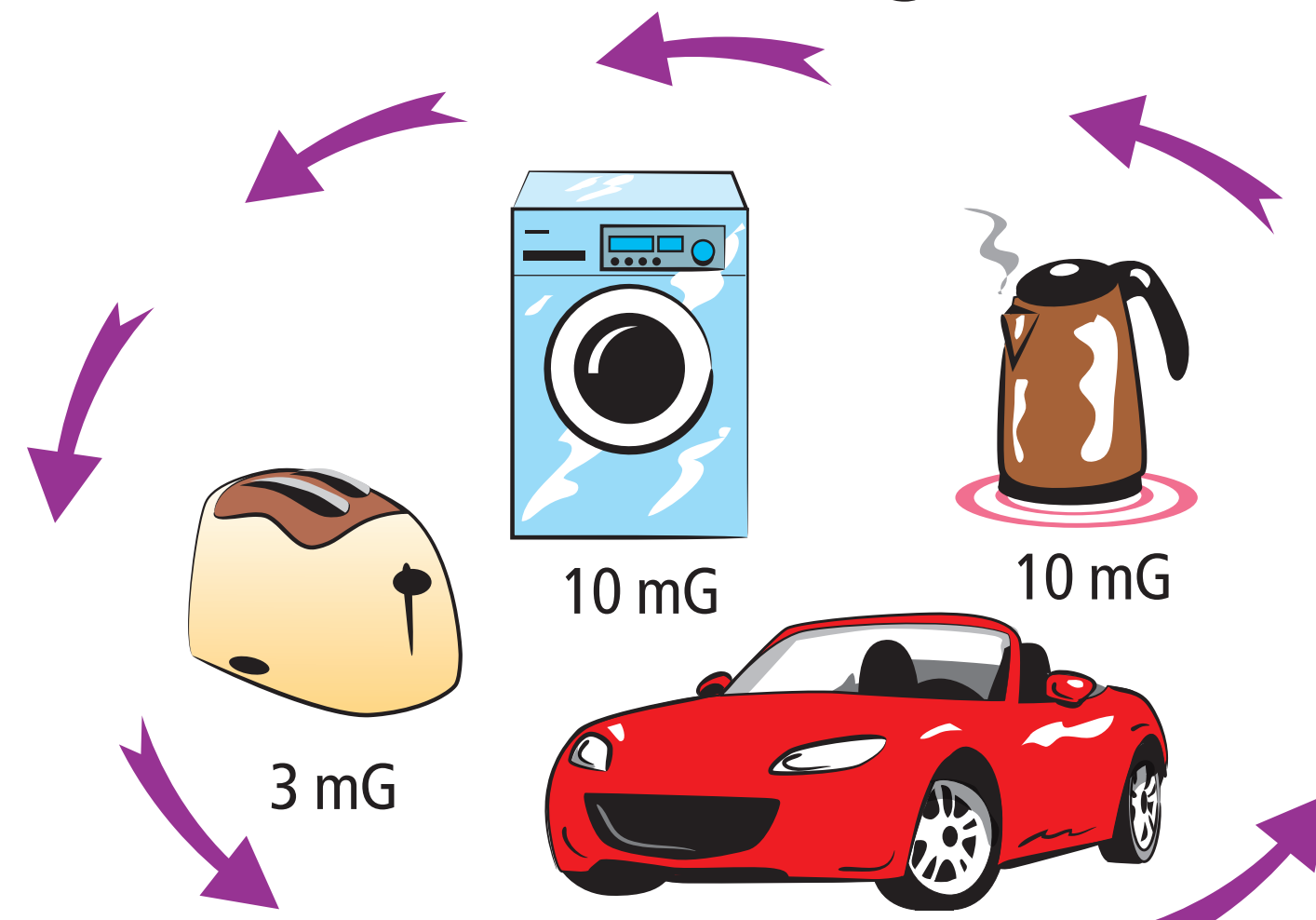


Anywhere electricity is used.

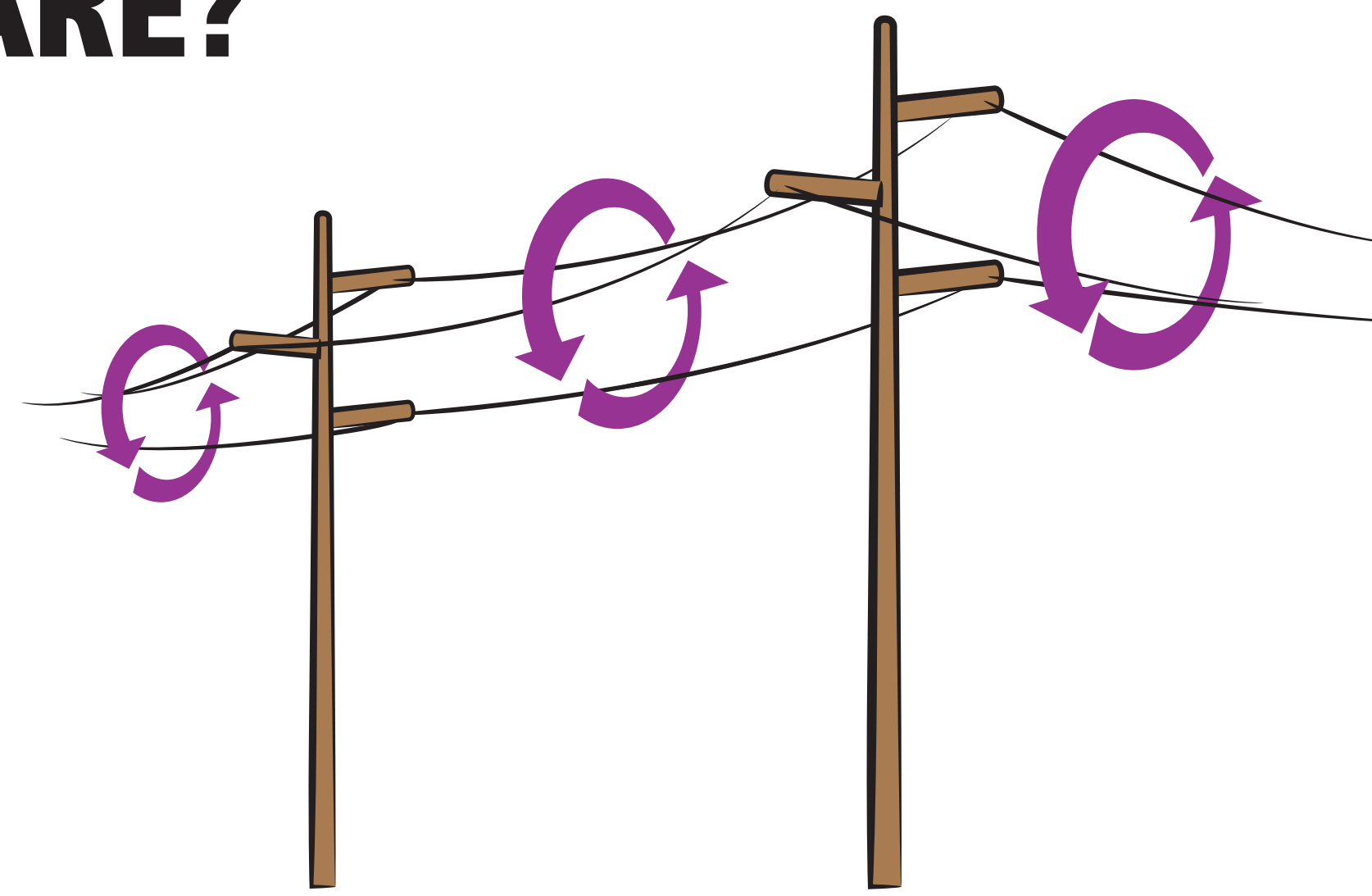
How do they COMPARE?



550 mG, static field



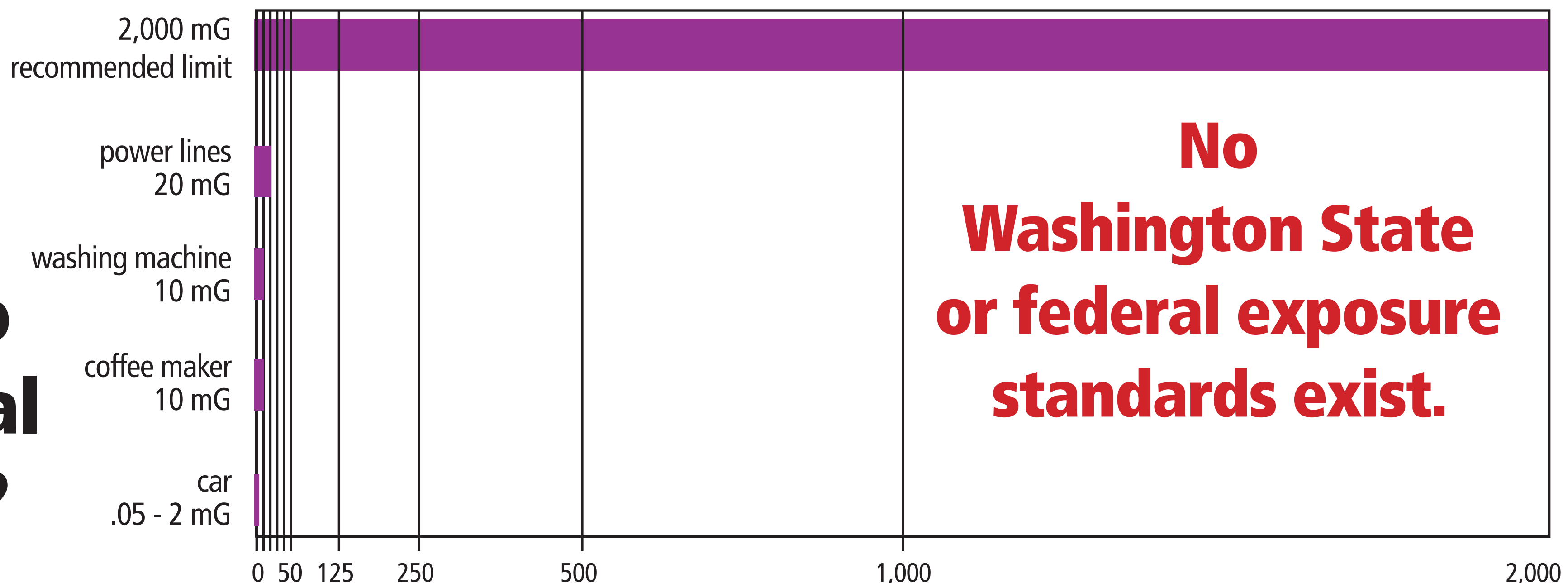
Exposure at 1 ft distance



230 kV Power Line:
at 50 feet the magnetic field is ~20 mG
at 100 feet the magnetic field is ~7 mG

mG = milliGauss

How do exposures compare to international guidelines?



No Washington State or federal exposure standards exist.