

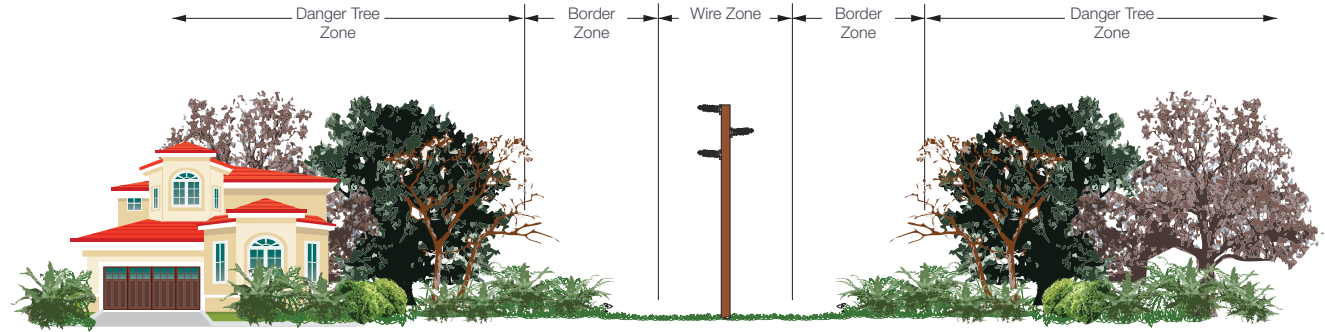
# What we're hearing

## How will trees be affected?

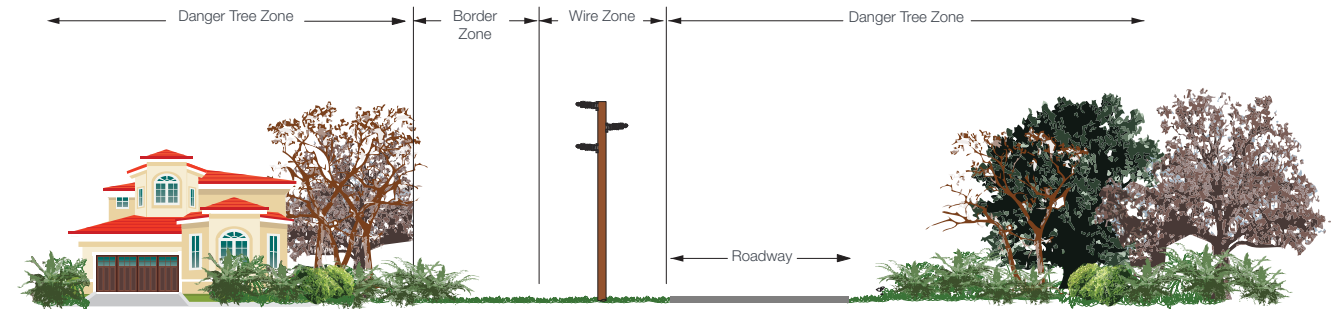
PSE's transmission vegetation management program generally requires removing trees located in the wire zone that have a mature height of more than 15 feet, unless terrain conditions allow 20 feet of clearance between the line and the mature height of the tree.

Trees located within the border zone will typically be trimmed or removed to maintain a clearance of up to 20 feet from the nearest line.

### Scenario 1 - Pole near a home and vegetation



### Scenario 2 - Pole near a home and roadway



**Wire Zone:** Section of a utility transmission right-of-way directly under the wires and extending to 10 feet on each side.

**Border Zone:** A section of transmission right-of-way that extends roughly 10 feet from the outside transmission wire.

**Danger Tree Zone:** Outside the border zone. Trees here that are predisposed to falling and likely to come in contact with nearby lines are proactively removed to reduce the likelihood of problems.