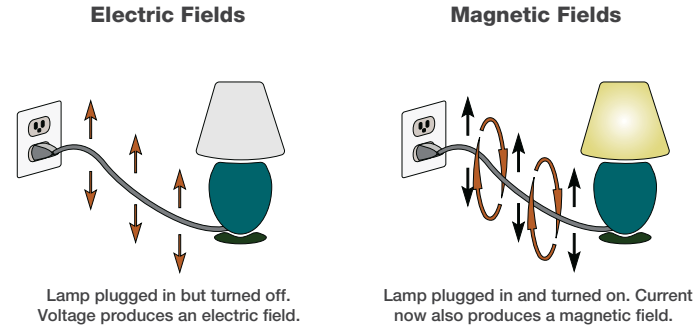


### Are there health concerns with EMF?

PSE has looked to the experts for guidance on electric and magnetic fields, or EMF.

There is a 45-year body of research that does not show that exposure to EMF from transmission lines causes adverse health effects.

The World Health Organization recently concluded that current evidence does not confirm the existence of any health consequences from exposure to low level EMF.

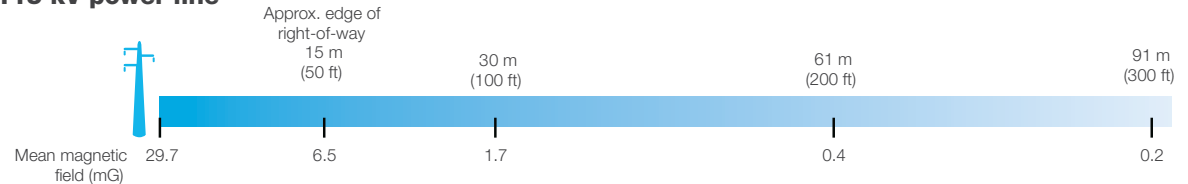


### EMF readings from everyday sources

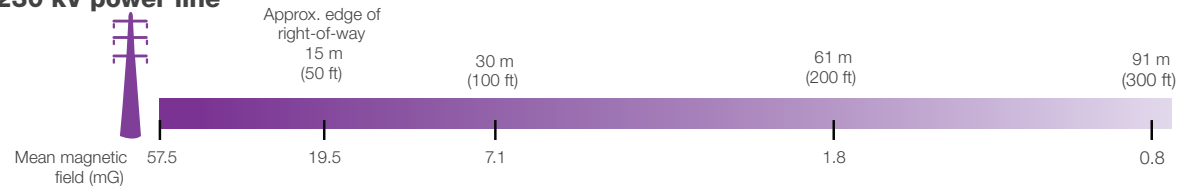
Source*	Median EMF reading in milligauss (mG)
Earth's magnetic field	250 - 650 mG
Video display terminals (VSTs) (distance 1')	5 mG
Electric range (distance 1')	8 mG
Dishwasher (distance 1')	10 mG
Copy machine (distance 1')	20 mG
Vacuum cleaner (distance 1')	60 mG
Electric shaver (distance 6")	100 mG
Hair dryer (distance 6")	300 mG

### Magnetic fields decrease as distance from electricity sources increases

#### 115 kV power line



#### 230 kV power line



\*Source: National Institute of Environmental Health Sciences (NIEHS). EMF Questions and Answers. June 2002.