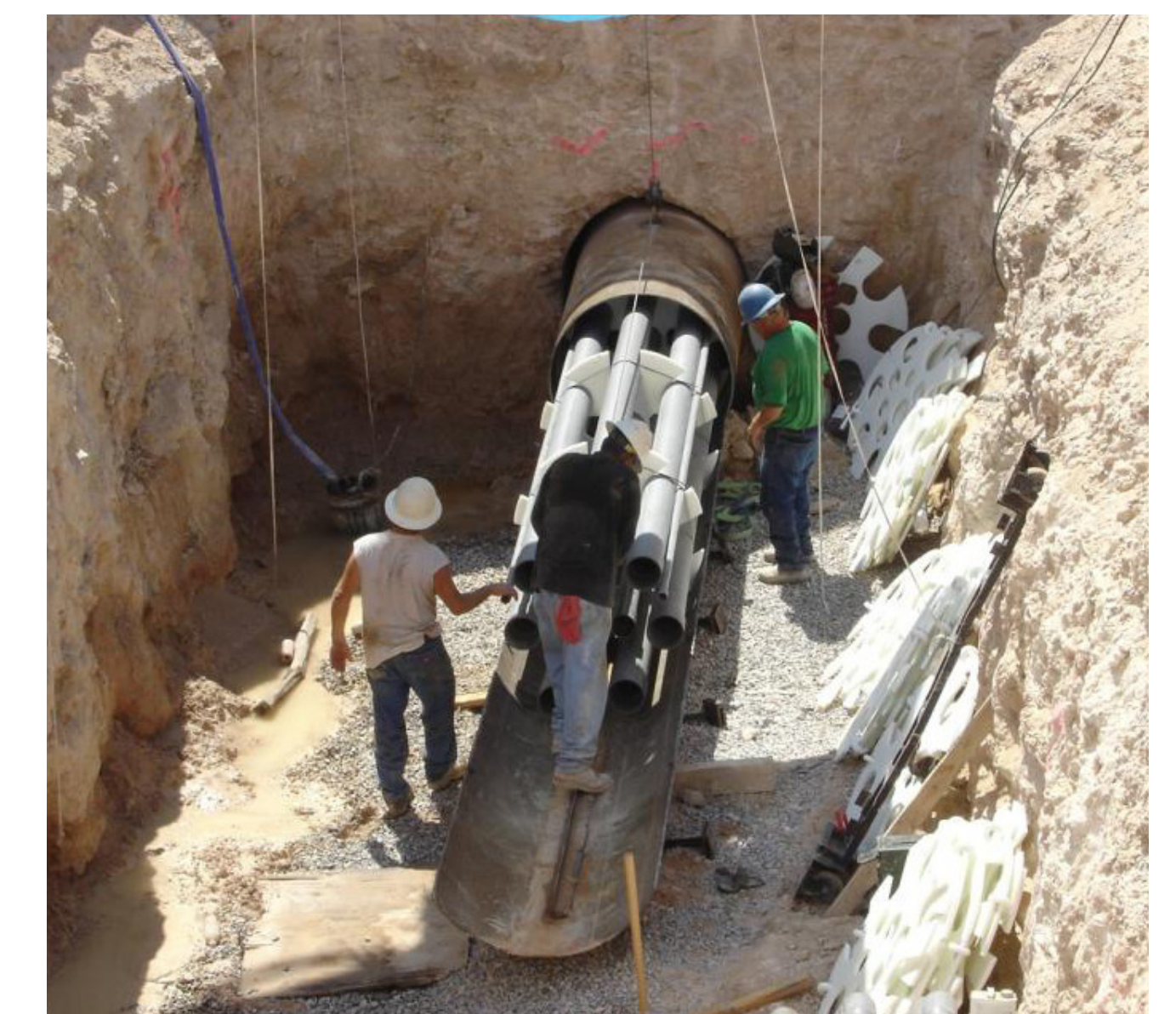


PSE can build underground transmission lines.

Overhead transmission lines are PSE's first option for their combination of reliability and affordability – both of which are important to our customers.

Per state-approved tariff rules, the additional cost to underground a proposed line must be paid for by the group requesting the undergrounding.

PSE would provide technical support if a community decides to invest in underground lines.



These photos show typical underground transmission line infrastructure and construction.

CONSTRUCTION COST COMPARISON

Overhead: \$3 million to \$4 million per mile

Underground: \$20 million to \$28 million per mile

REPAIRS COMPARISON

Overhead: Typically hours to days

Underground: Typically days to weeks