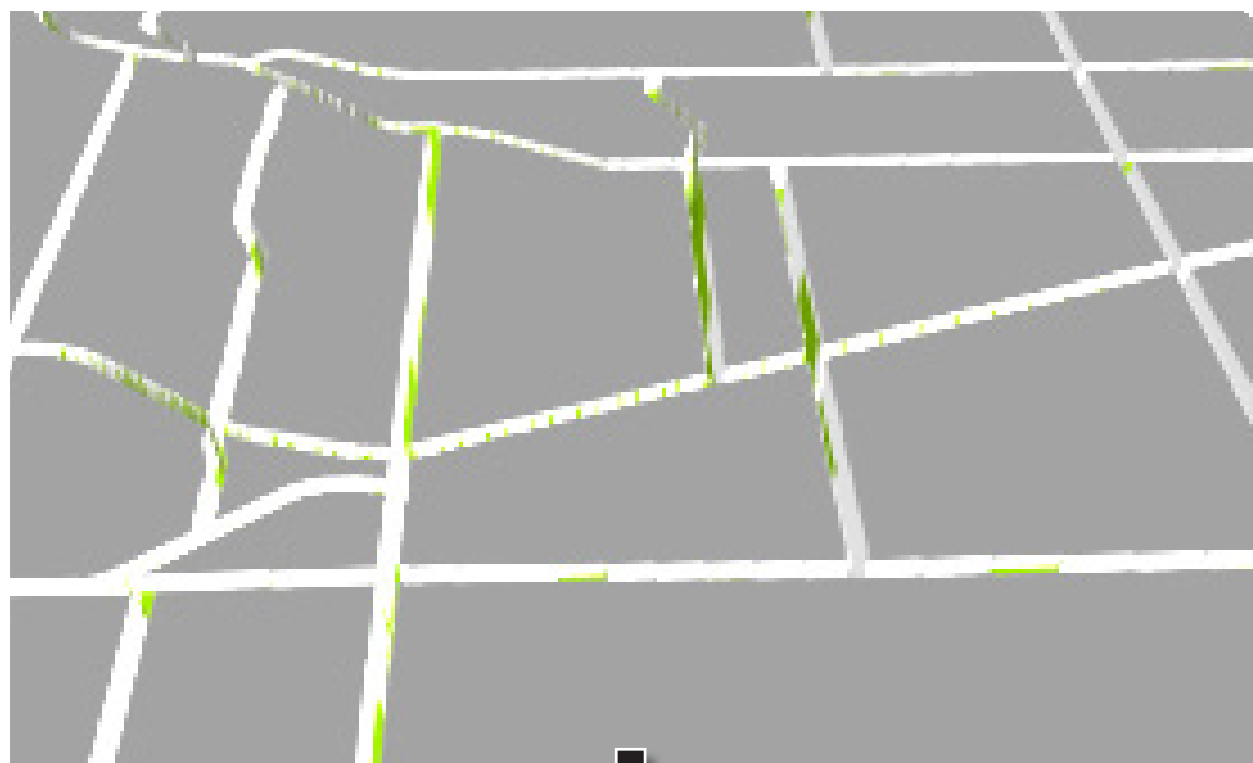


Finding Route Alternatives

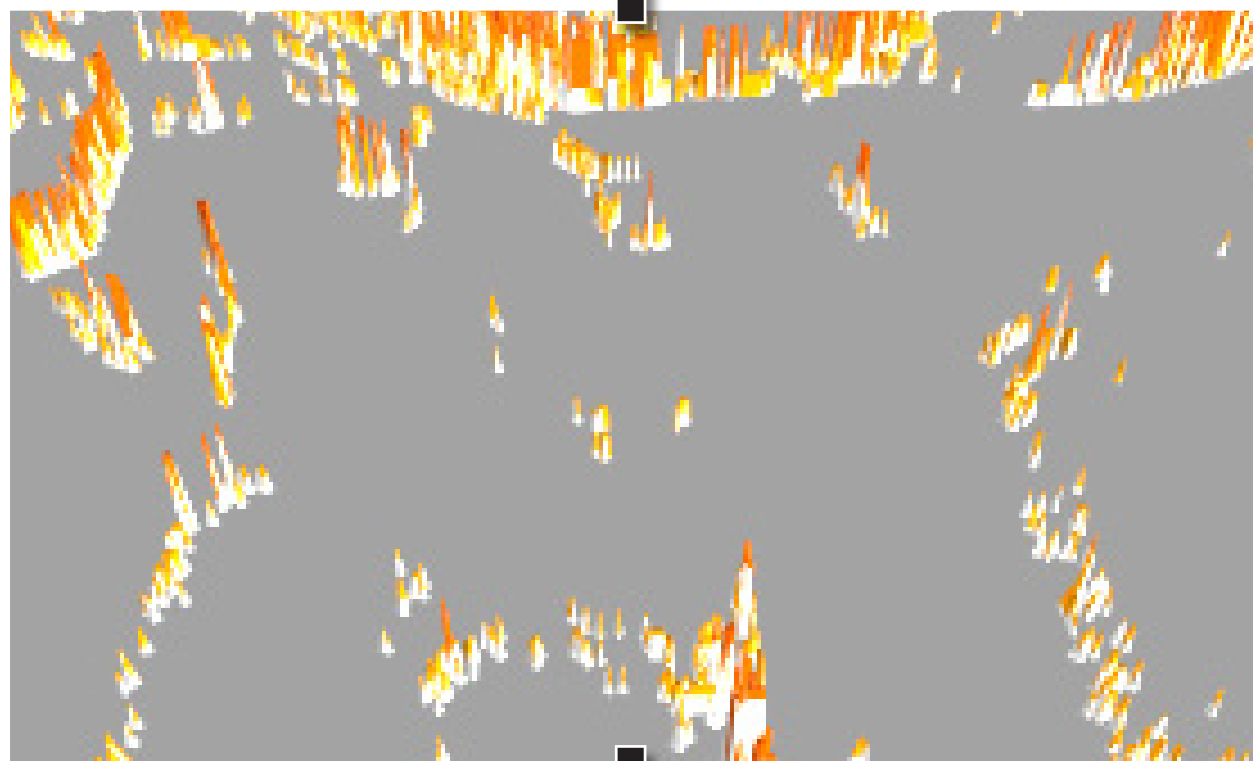
This example adds three feature types to show how a Suitability Grid is created.
The Energize Eastside project summed nearly 50 feature types to create the Suitability Grid.

Bird's Eye View

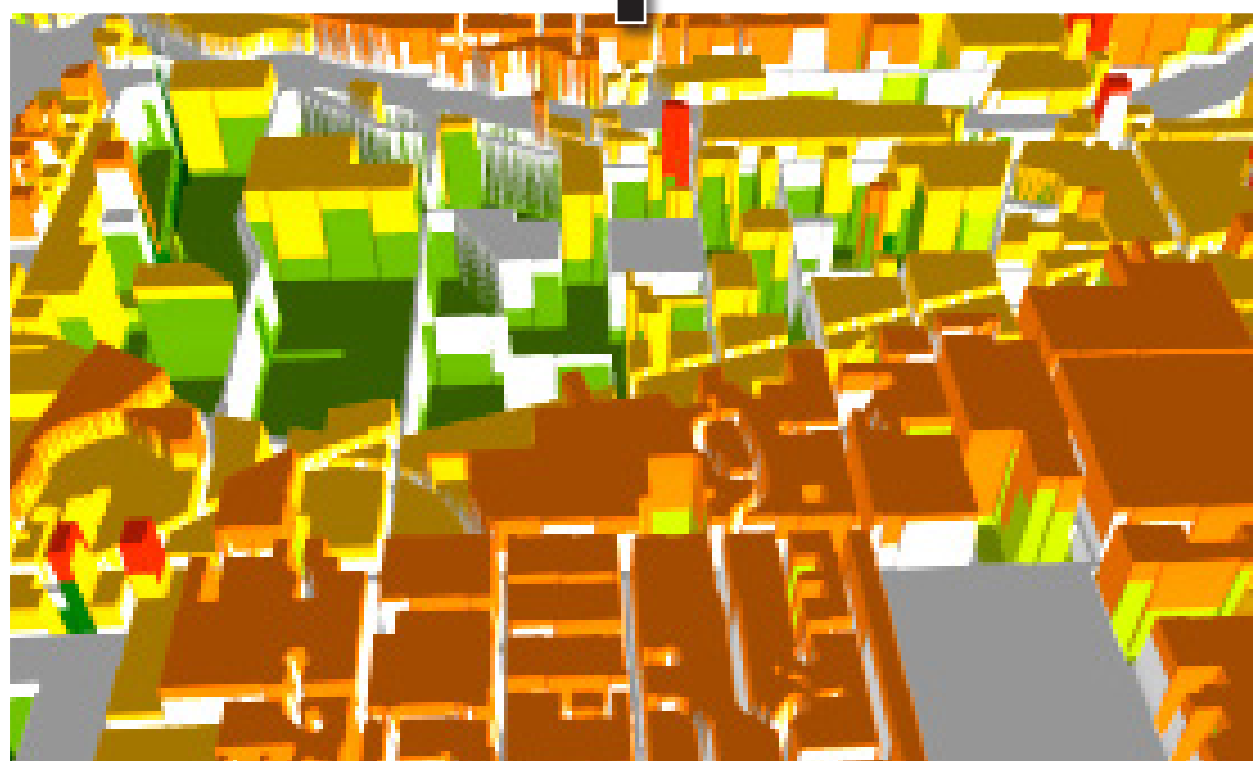
Arterial Corridors
(Potential areas of opportunity)



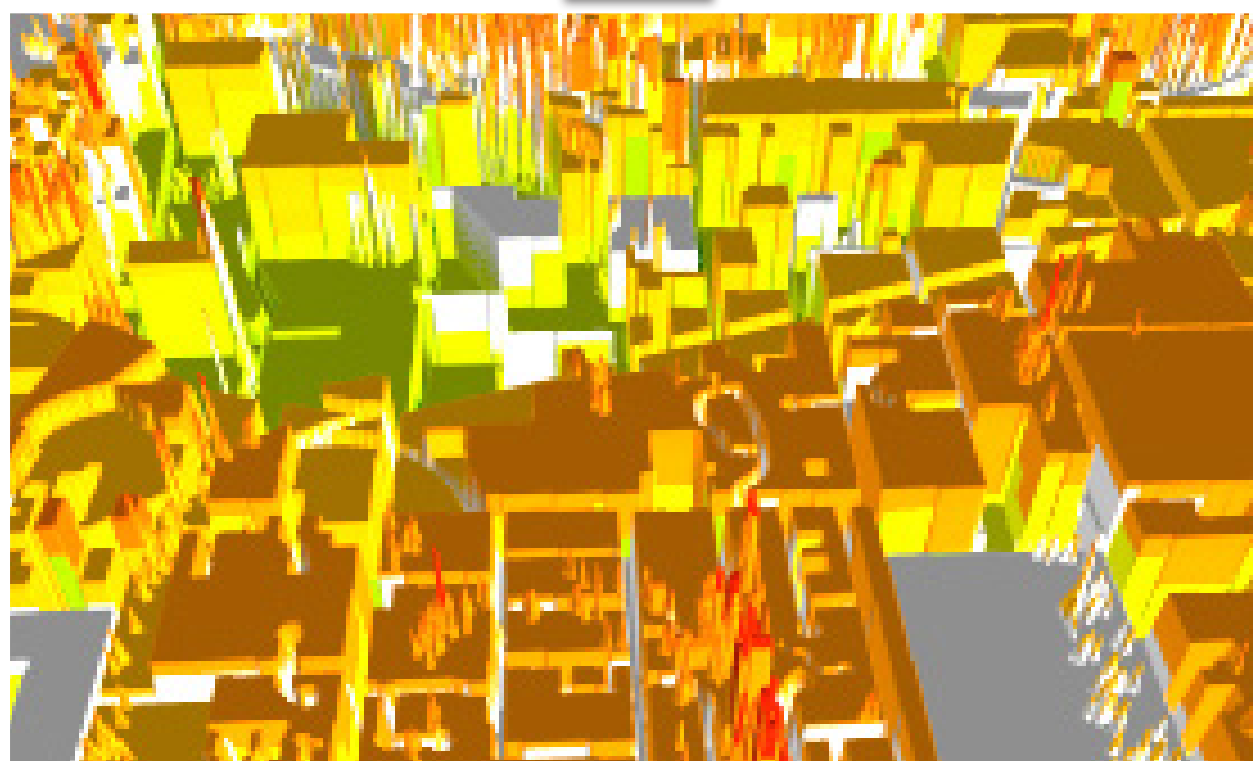
Slope Stability
(Areas to avoid)



Land Use
(Areas of potential opportunity and avoidance)

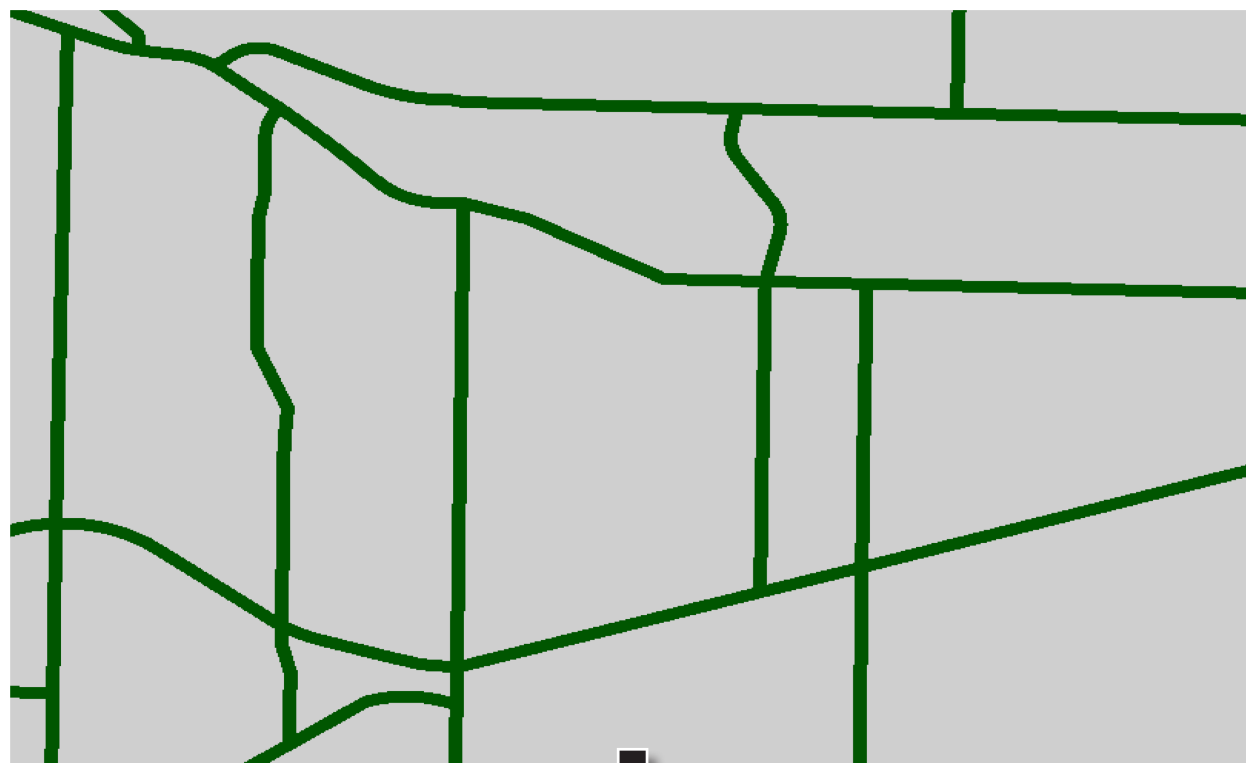


Summed Suitability Grid
(The route should avoid the red peaks and utilize the green valleys)

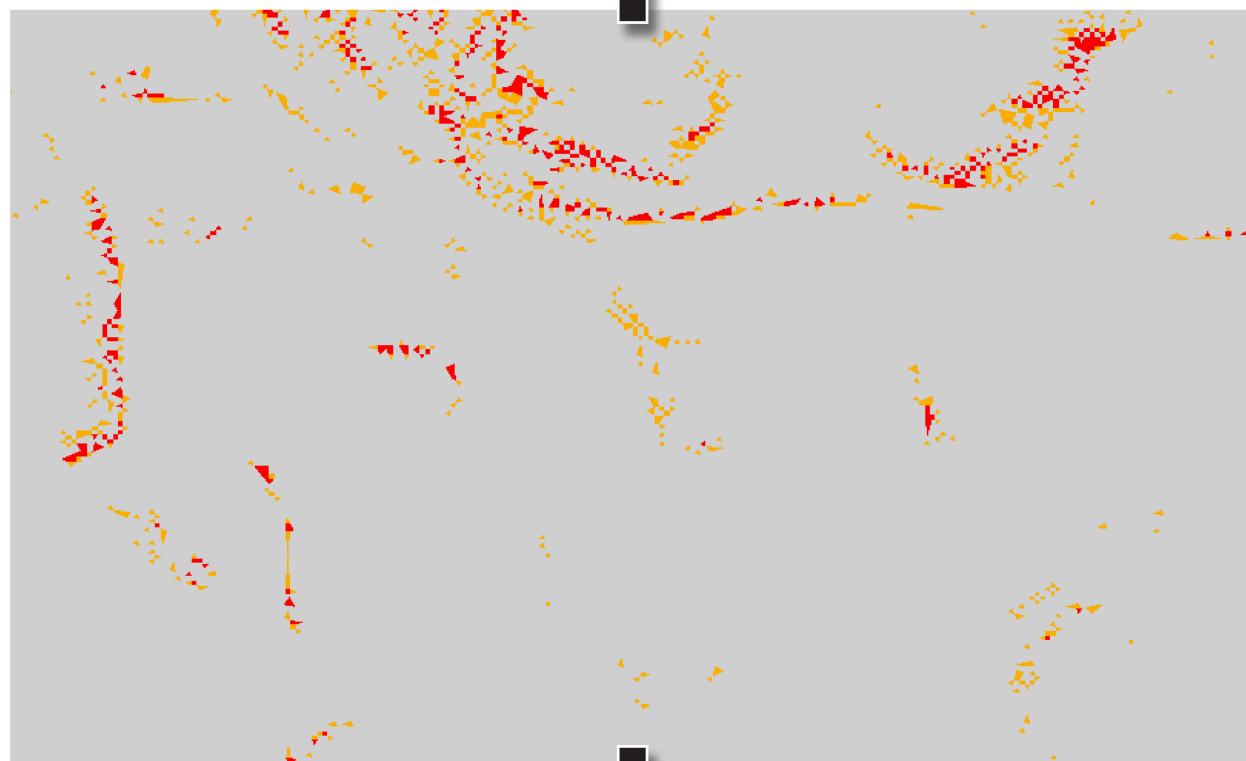


Plan View

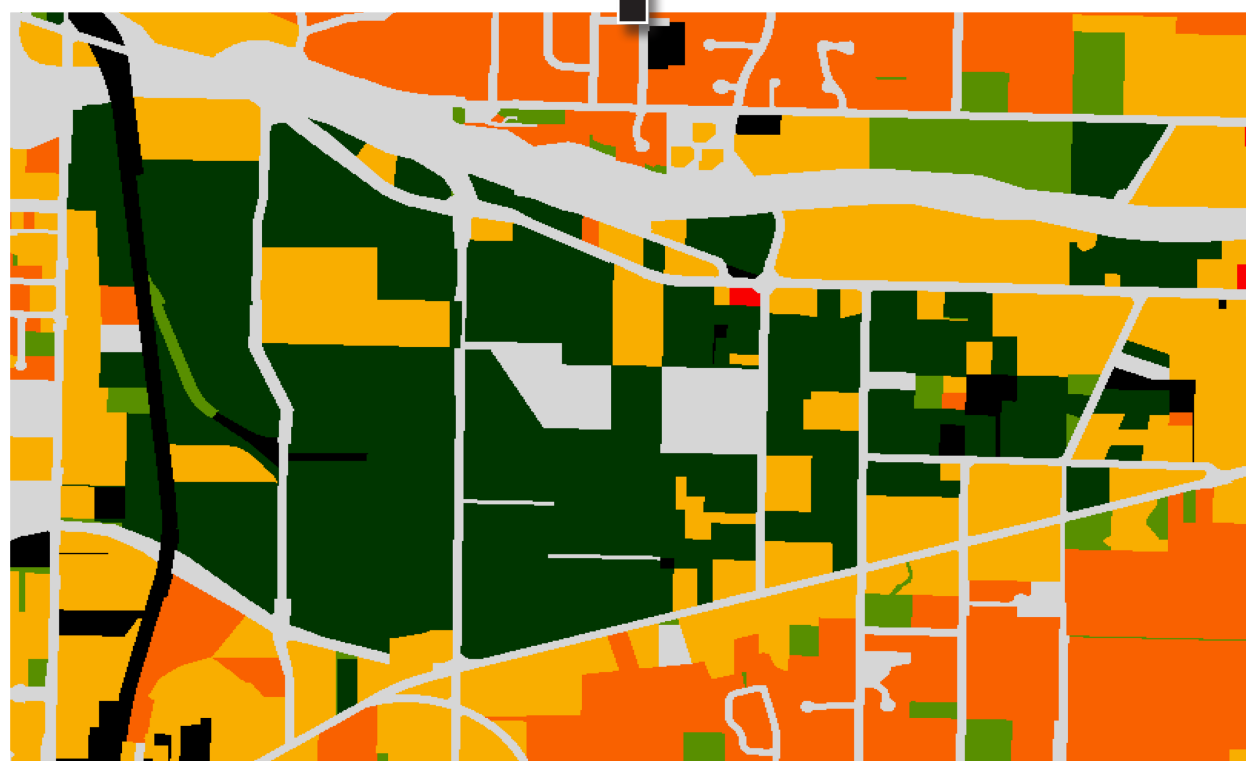
Arterial Corridors
(Potential areas of opportunity)



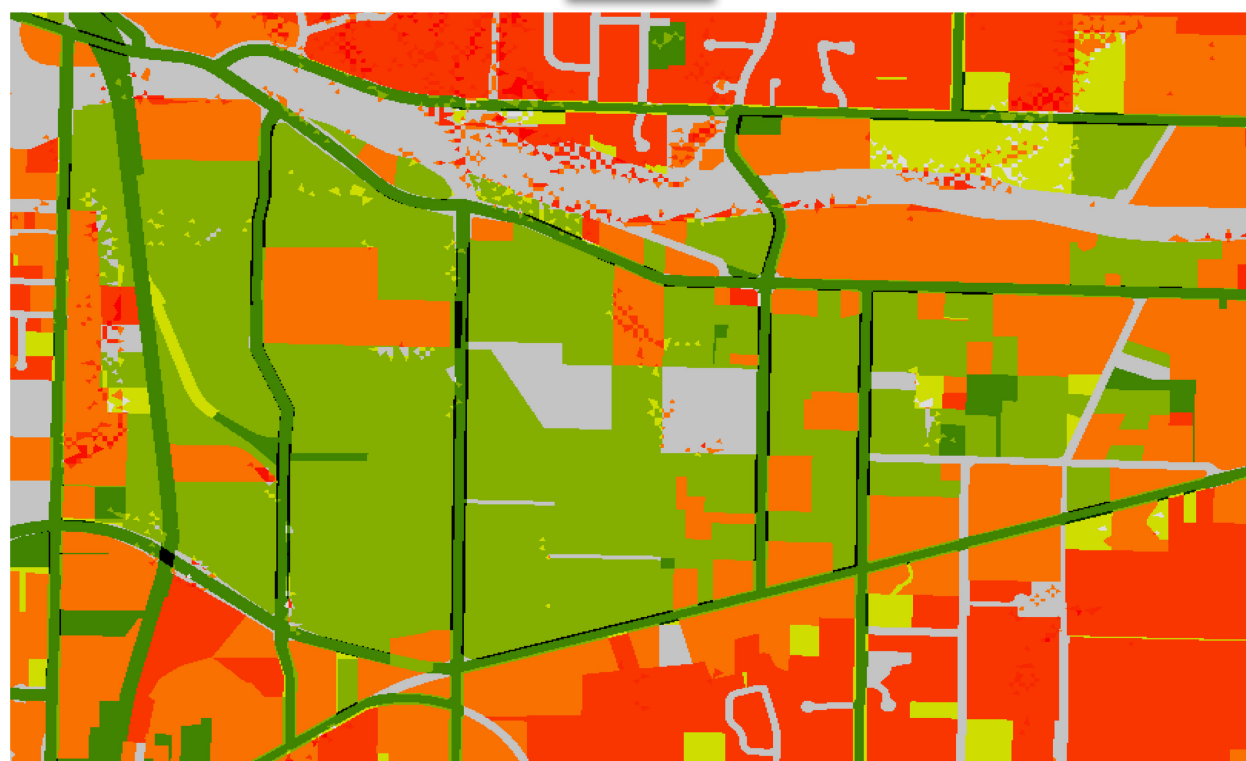
Slope Stability
(Areas to avoid)



Land Use
(Areas of potential opportunity and avoidance)



Summed Suitability Grid
(The route should avoid the red areas and utilize the green areas)



AREAS TO AVOID



POTENTIAL
AREAS OF
OPPORTUNITY

AREAS TO AVOID



POTENTIAL
AREAS OF
OPPORTUNITY