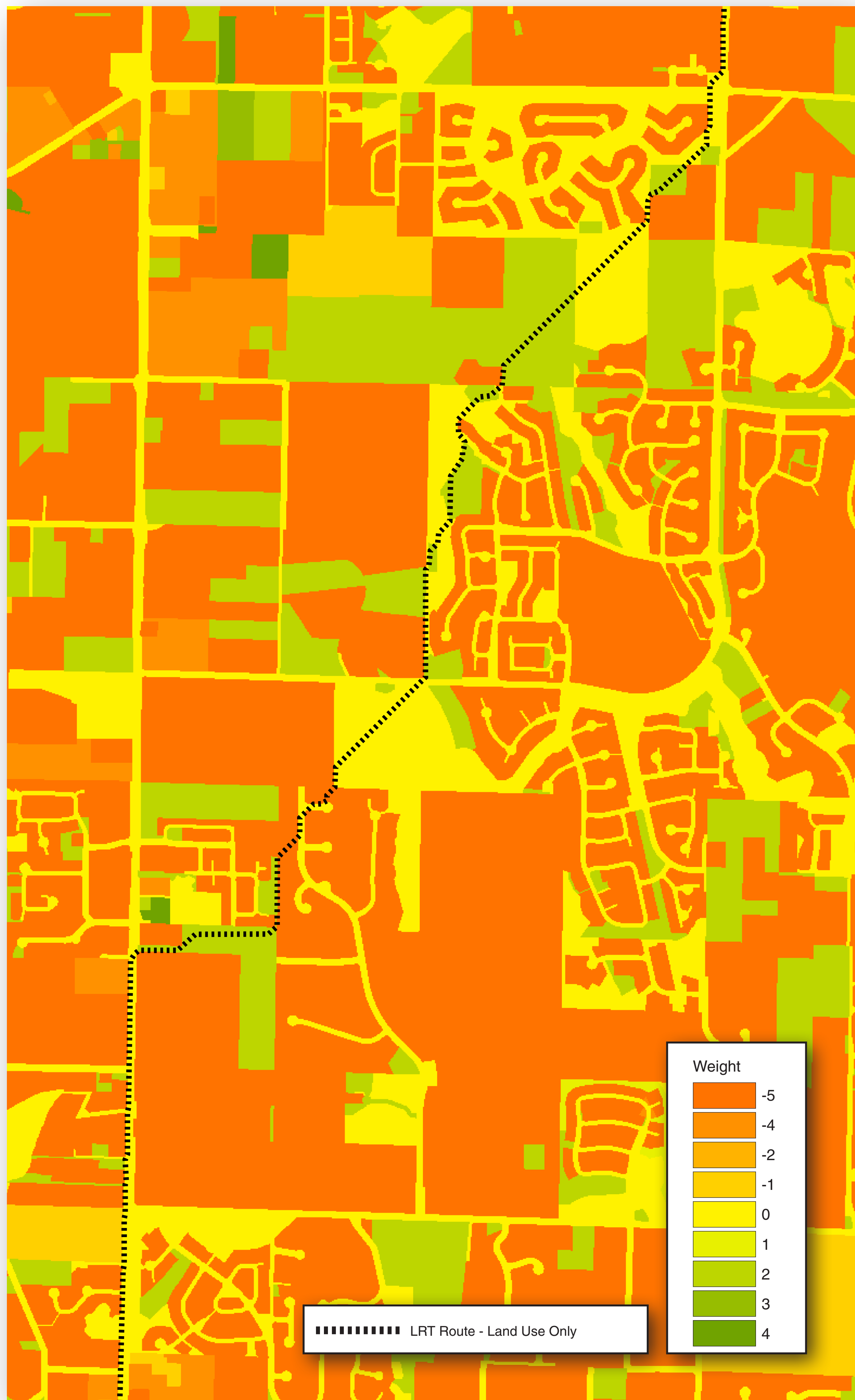
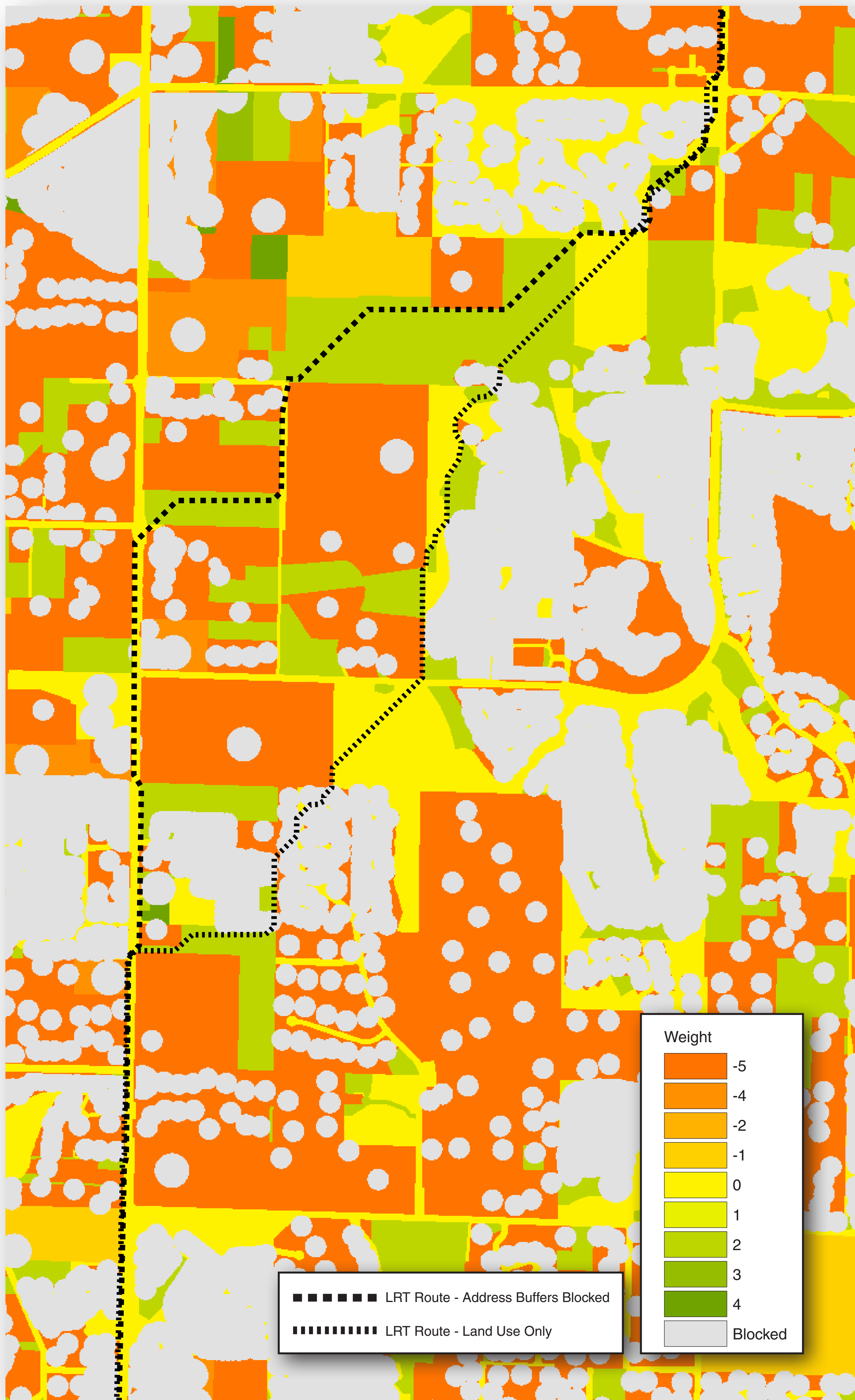


How Data Changes Routes

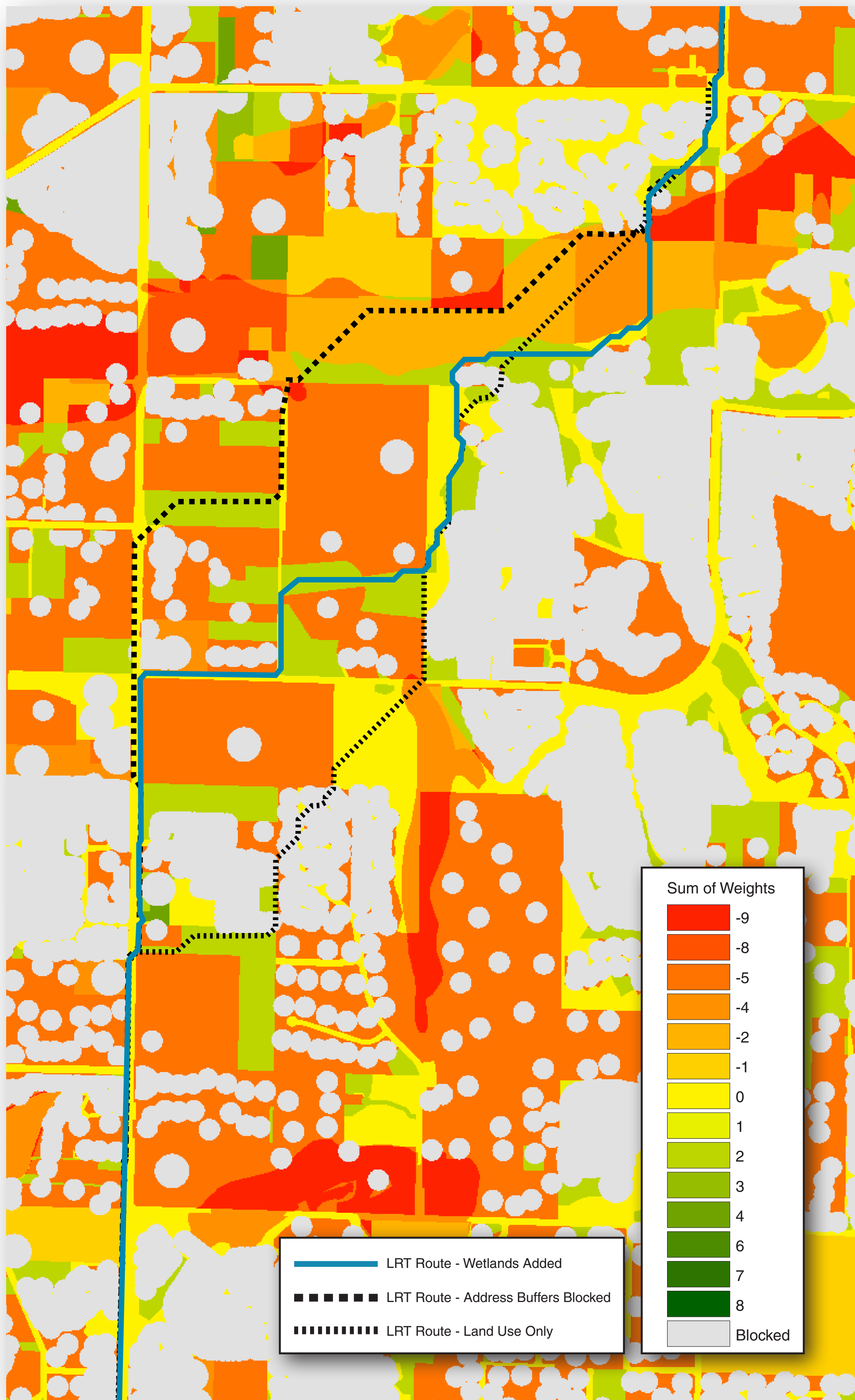
The three maps below show how a hypothetical route would change based on the data used to develop the Suitability Grid.



■ The route is only influenced by land use.



■ Buffers around structures that prohibit the route have been combined with land use to create the Suitability Grid.



■ Wetlands have been combined with land use and structure buffers.

As you can see, the route changes in response to each new data set added to the Suitability Grid analysis.

Over 50 data sets were used as input to the Suitability Grid generated for the Energize Eastside Project.