

Energize Eastside

*Meeting Increasing Electricity Demand,
Building for the Future*

Leann Kostek

*Senior Project Manager,
Puget Sound Energy*

Jens Nedrud

*Deputy Project Manager,
Puget Sound Energy*

energize**EASTSIDE**

Winter 2014

About Puget Sound Energy

Washington state's oldest local energy company
1.1 million customers in 10 counties



Presentation overview

1. How is growth straining our region's existing electric transmission system?
2. Why is conservation alone not enough?
3. Why does PSE need to act now?
4. What is the Energize Eastside project?
5. How will PSE work with the public to identify solutions?
6. Q&A

Eastside system: 1930s to today

System first installed in
the **1930s**



3rd Avenue looking west, 1920s - Renton



Leary Way, 1940 - Redmond



NE 8th Avenue and Bellevue Way, 1930s - Bellevue

Eastside then and now

Somerset

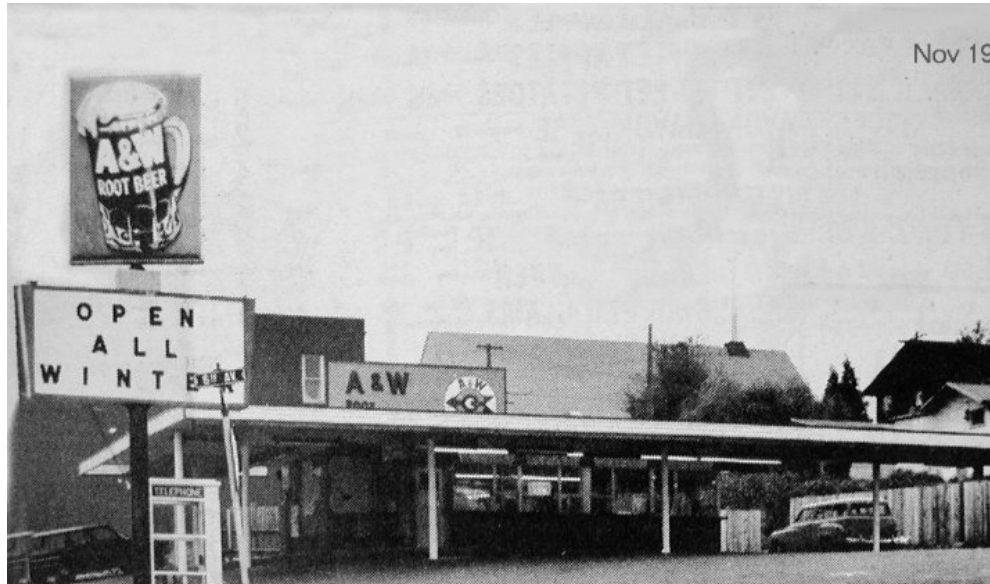
1960s

Today



Eastside then and now

Kirkland



NEW TO KIRKLAND — NEW TO
canopy, complete with infra-red
matter how cold the weather y
and Pat Reid invite you to come
is 610 Market Street. (Paid Adver



Eastside then and now

Redmond



Historic photo courtesy of the
Eastside Heritage Center

Eastside then and now

Bellevue



Eastside then and now

Renton

1950s

Today



Historic photo courtesy of the
Renton History Museum

Eastside: home to industry leaders



PACCAR

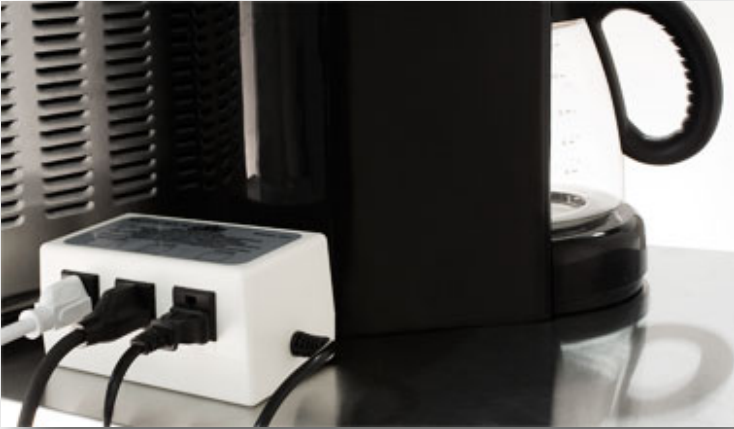
T · · · Mobile ·



Google

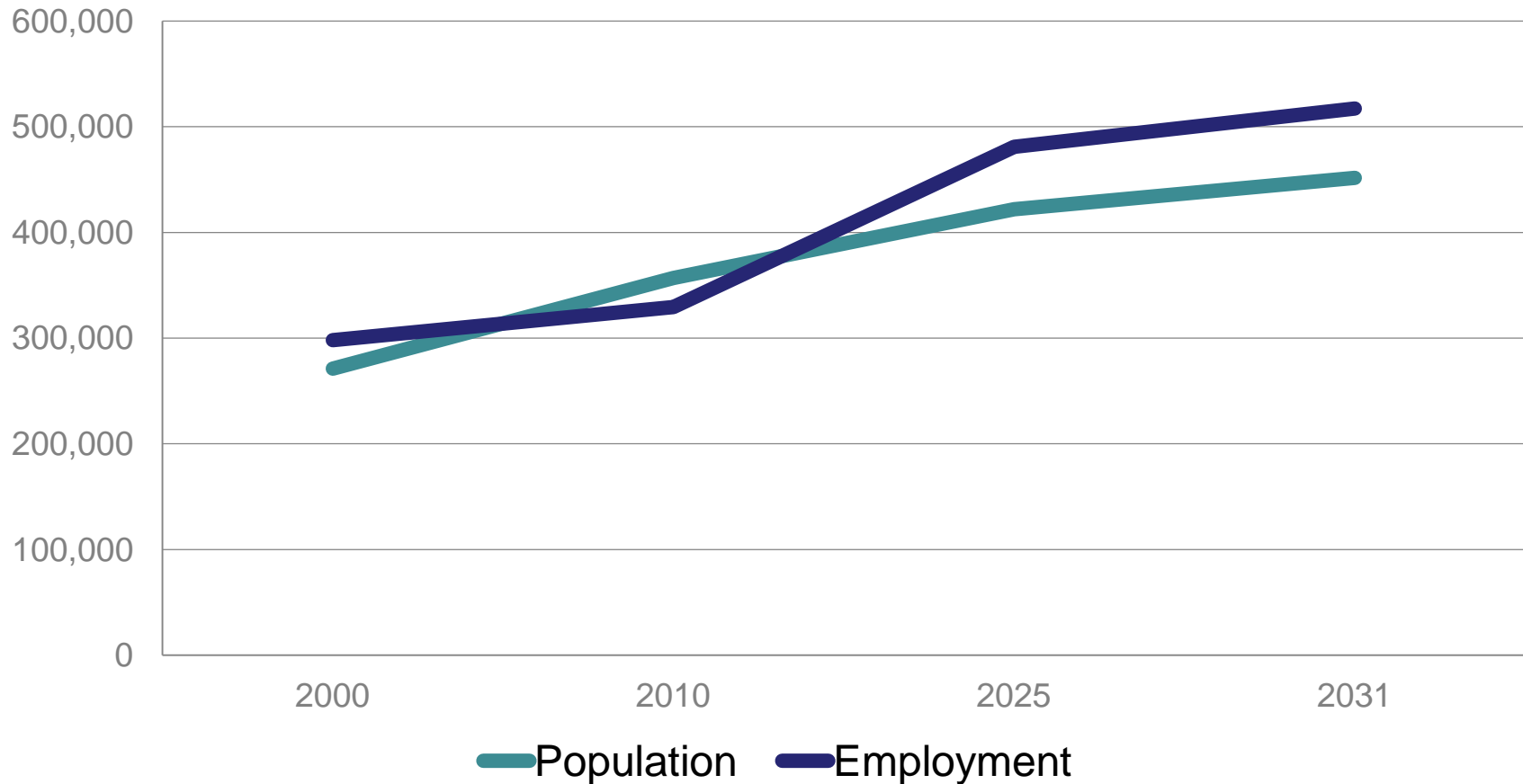


Household energy use



Growth is straining the system

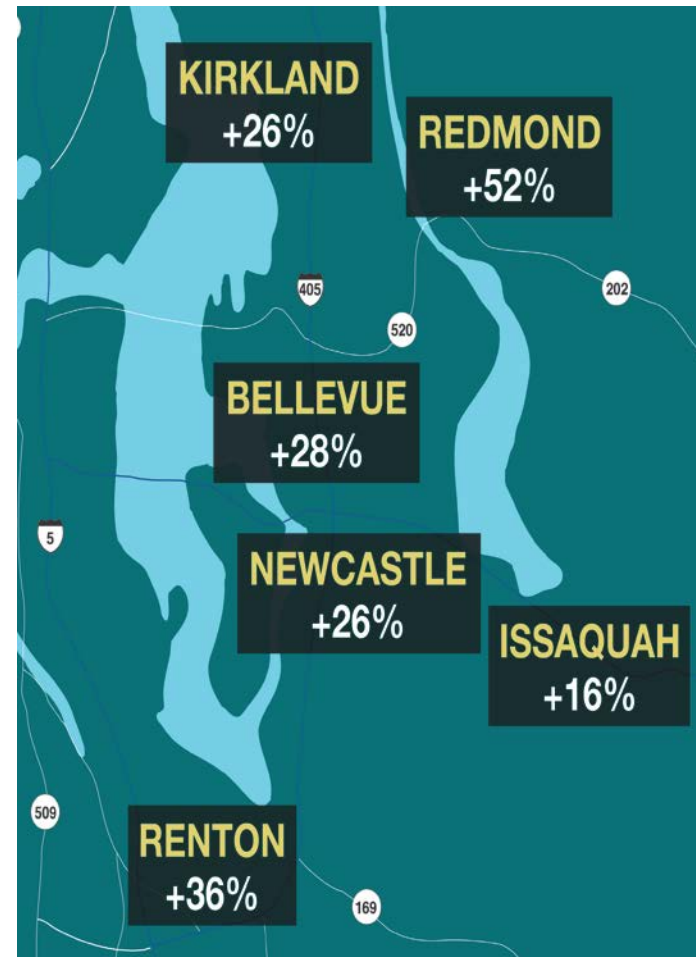
PROJECTED POPULATION AND EMPLOYMENT GROWTH



Growth is straining the system

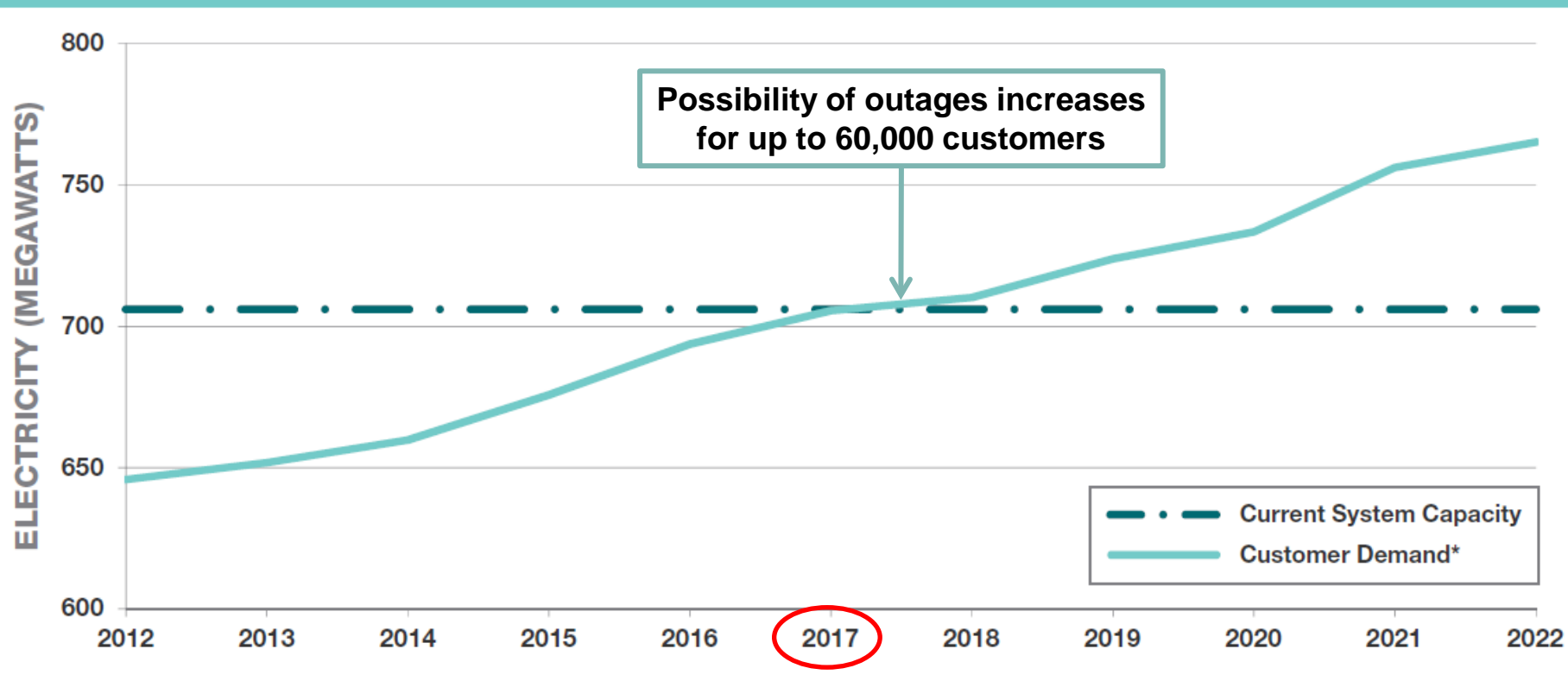
Regional growth

- Population predicted to grow by more than a third
- Employment to grow 70% between 2012 and 2040



We need to act now

EASTSIDE CUSTOMER DEMAND FORECAST



*Customer Demand assumes 100% of conservation goals are met.

Conservation alone is not enough

Growth and demand on the system have outpaced our **conservation efforts**

Without **infrastructure upgrades**, customers are at risk of outages



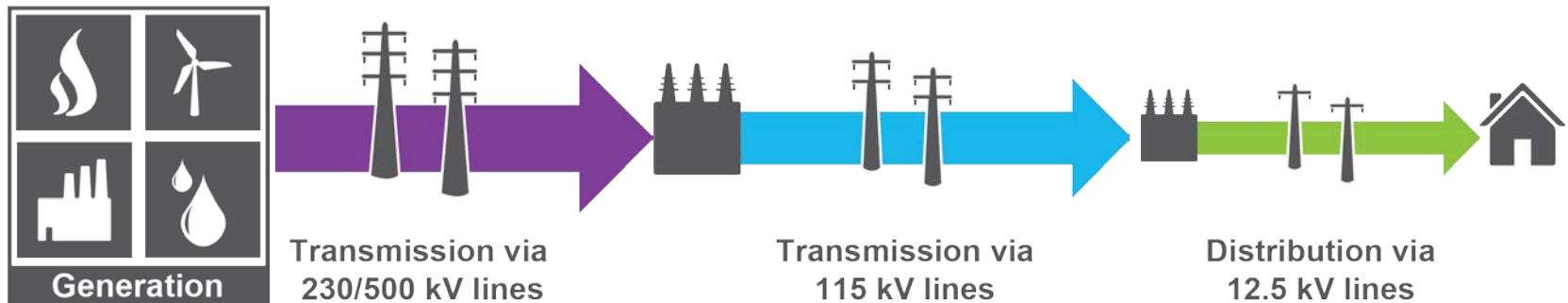
Our solution

energize**EASTSIDE**

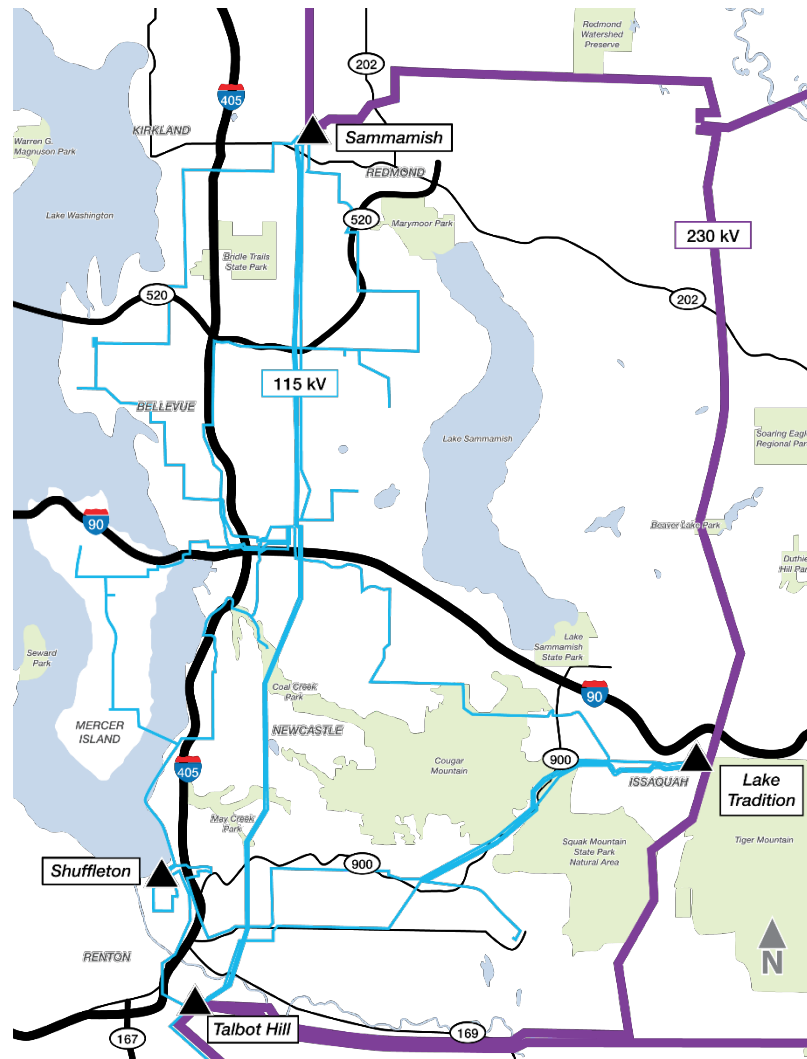
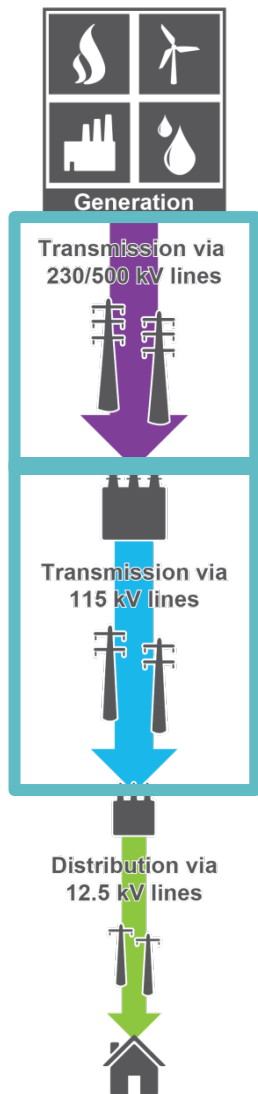
Builds approximately 18 miles of **new 230 kV transmission lines** from Redmond to Renton

Supports the area's **growth**

How power gets to the Eastside



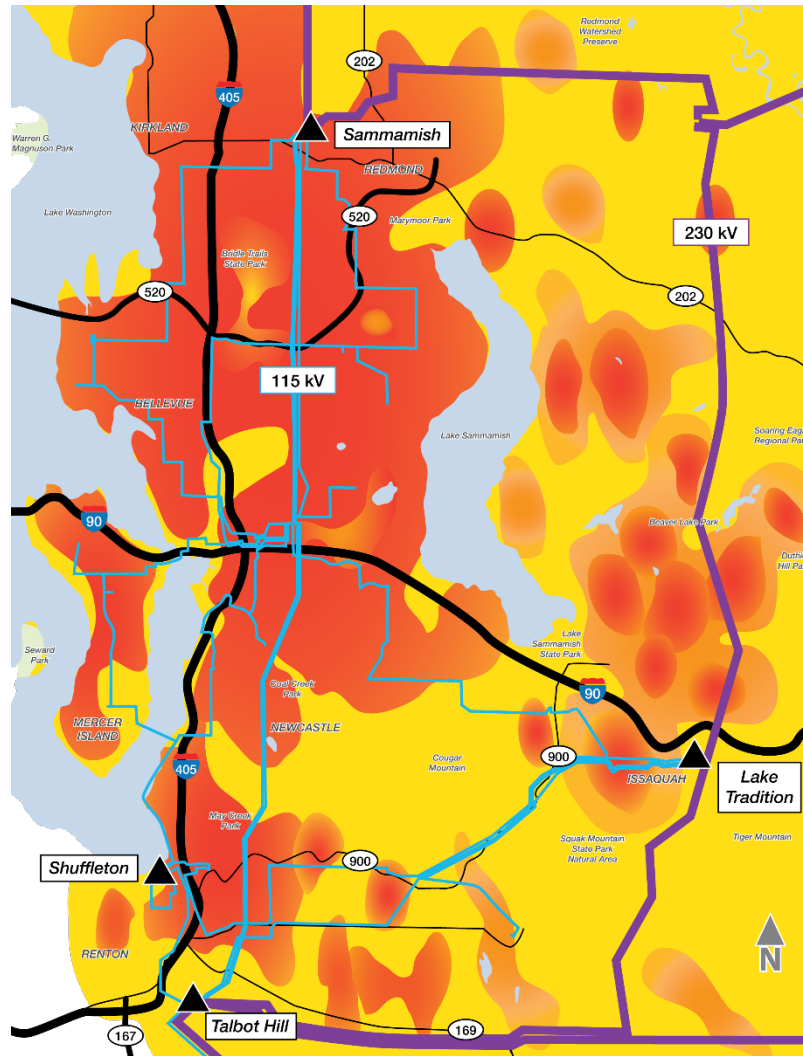
How power gets to the Eastside



Legend

- Existing bulk transmission lines (230 kV)
- Existing transmission lines (115 kV)
- Substations

System demand



Legend

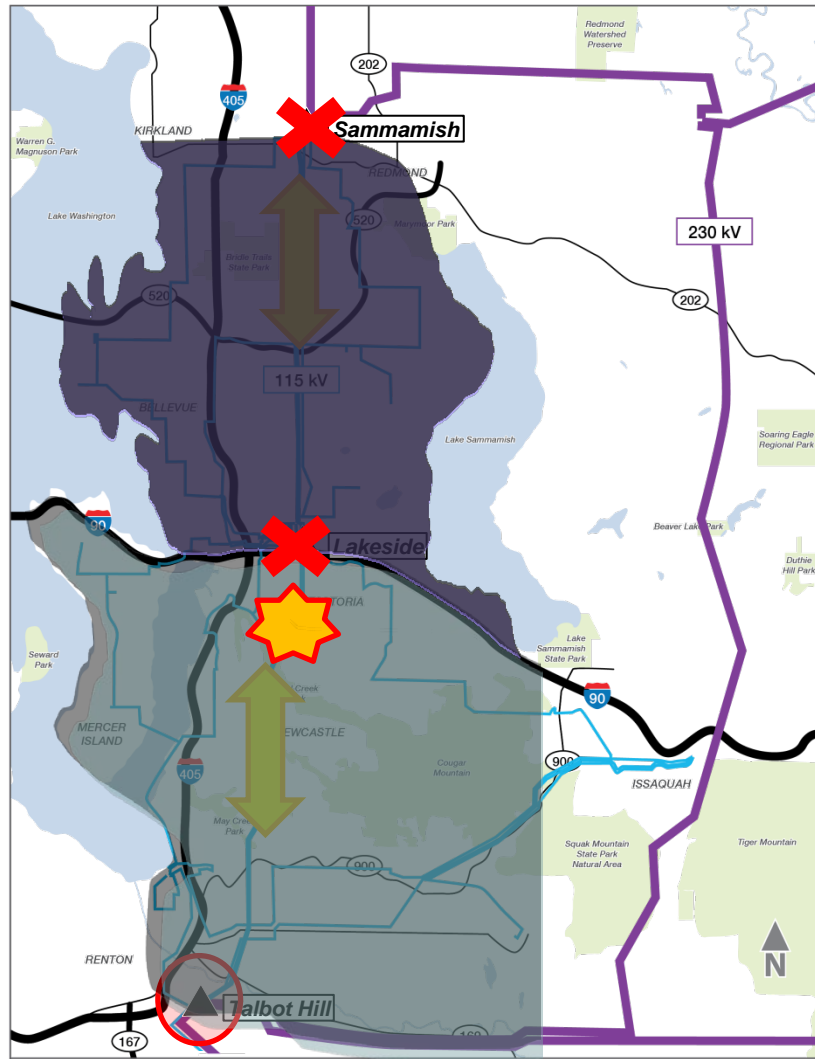
- Existing bulk transmission lines (230 kV)
- Existing transmission lines (115 kV)



Electric demand density



Eastside system challenges



Legend

- Existing bulk transmission lines (230 kV)
- Existing transmission lines (115 kV)
- Substations



Solution selection process

1

What are the potential approaches to meet the Eastside's electricity needs?



conservation



local generation



infrastructure

2

What approaches provide enough electricity to meet the Eastside's needs?



3

What solutions best deliver electricity to the Eastside?

Redmond



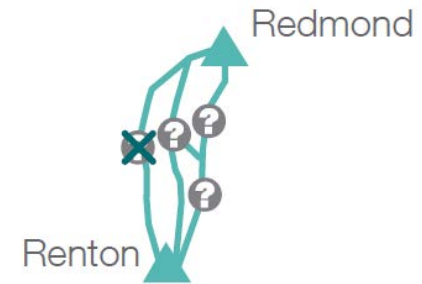
Renton



Solution selection process

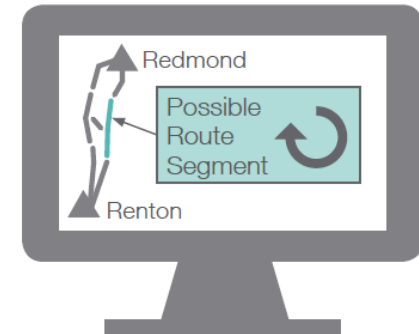
4

What solutions can PSE move forward with?



5

Where could PSE build a solution?



6

What does the public recommend?



Solution selection process

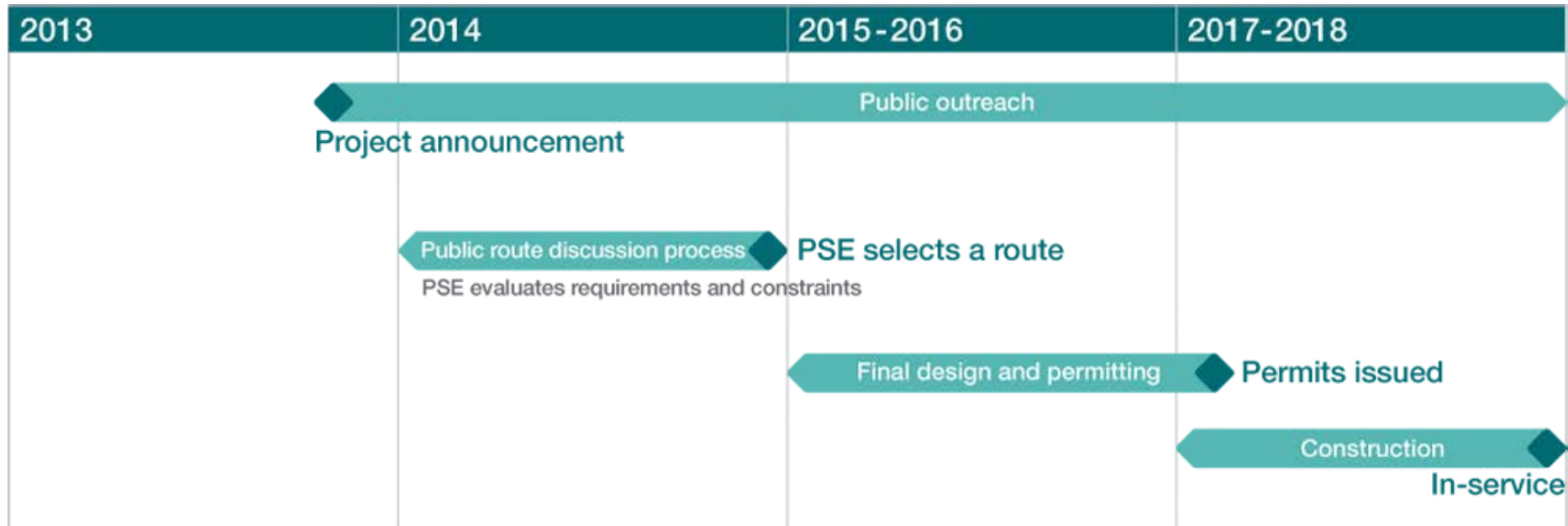
ONE SELECTED ROUTE

After collecting feedback from the public, CAG and other stakeholders, PSE will further evaluate requirements and constraints and select the preferred route and substation to move forward for final design, environmental review and permitting.

Potential route segments



Project schedule



We want to hear from you

We are asking the public: **Which combination of route segments best serves the Eastside's needs?**



Community Advisory Group

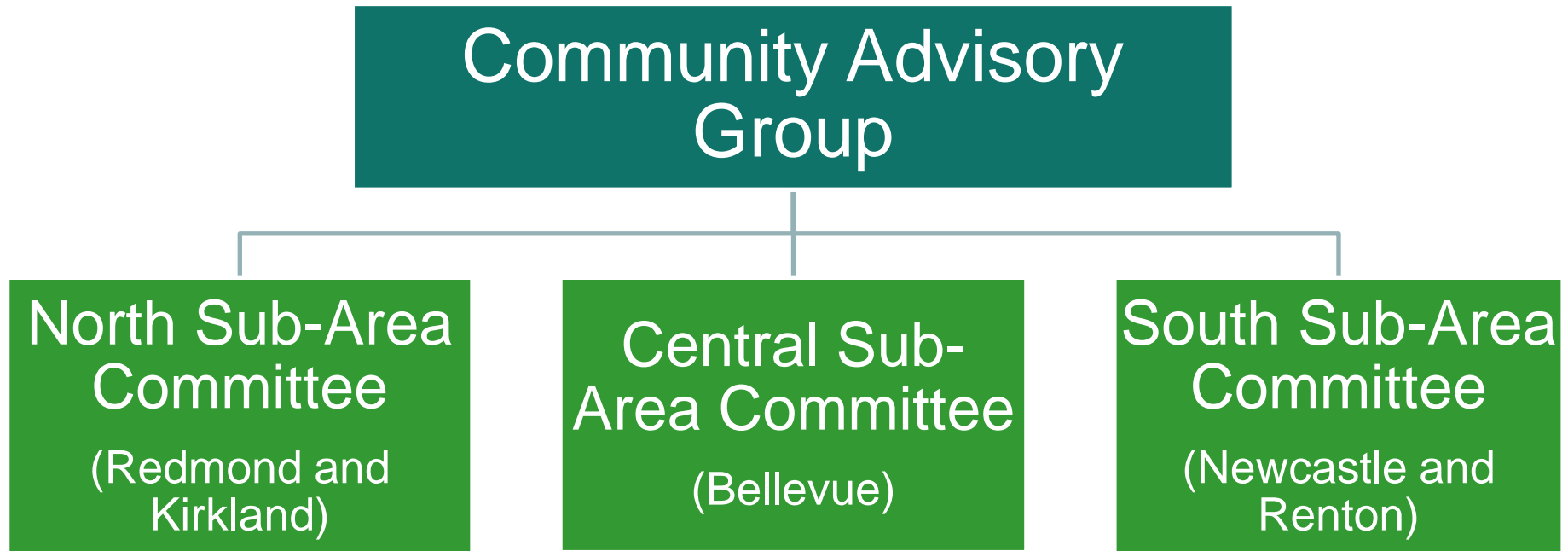


Advisory group representation

Community Advisory Group members represent :

- Bellevue School District
- Bridle Trails Community Club
- City of Bellevue
- City of Kirkland
- City of Newcastle
- City of Redmond
- City of Renton
- Coal Creek Family YMCA
- Hopelink
- Kenneydale Neighborhood Association
- King County
- Master Builders Association
- Mountains to Sound Greenway
- One Redmond
- Olympus Neighborhood Association
- Overlake Hospital Medical Center
- Puget Sound Energy
- Redmond Neighborhoods
- Renton Chamber of Commerce
- Renton Technical College
- Somerset Community Association
- South Rose Hill/Bridle Trails Neighborhood Association
- Wilburton Community Association

Sub-Area Committees



2014 public outreach milestones

	WINTER	SPRING	SUMMER	FALL
COMMUNITY ADVISORY GROUP AND SUB-AREA COMMITTEES	Project need and Community Advisory Group process overview	Identify route options based on segments	Narrow route options	Community Advisory Group recommends route
COMMUNITY MEETINGS	Community meeting #1		Community meeting #2	Community meeting #3
OTHER PUBLIC OUTREACH OPPORTUNITIES	Neighborhood and community group briefings, drop-in sessions, fairs and festivals, public kiosks			

How to be involved



Comments

Submit **comments and questions**



Mailing list

Join our **mailing list**



Calendar

Participate in **community meetings**



CAG

Observe **Community Advisory Group meetings**

Questions?

Next steps for the advisory group

- Discuss community concerns
- Learn about the factors involved in developing the route segments
- Decide on community values based evaluation process to allow the advisory group to make a recommendation on the route

Upcoming activities

Join us for open houses

- Jan. 29 from 6-8 p.m. at the Old Redmond Schoolhouse Community Center in Redmond
- Jan. 30 from 6-8 p.m. at the Renton Pavilion Event Center in Renton

Next Community Advisory Group meeting

- Feb. 12 from 5:30-8:30 p.m. at the Rainier Hotel and Conference Center in Renton

Contact us

PSE Contacts:

Leann Kostek, Senior Project Manager

Cody Olson, Community Projects Manager

Stay in touch:

pse.com/energizeeastside

energizeeastside@pse.com

800-548-2614

Thank you!