



energizeEASTSIDE

project newsletter

Energize Eastside 2015 update

Puget Sound Energy (PSE) is committed to providing safe and reliable power to help sustain population and economic growth on the Eastside.

The Energize Eastside project will build new electric transmission lines and a new substation, which, combined with continued energy conservation, will keep the lights on for homes and businesses in our Eastside communities for years to come.

Eastside growth

The existing Eastside electric system was last upgraded in the 1960s. Since then, the region has seen dramatic growth – there are almost eight times more people on the Eastside today than there were just 50 years ago.

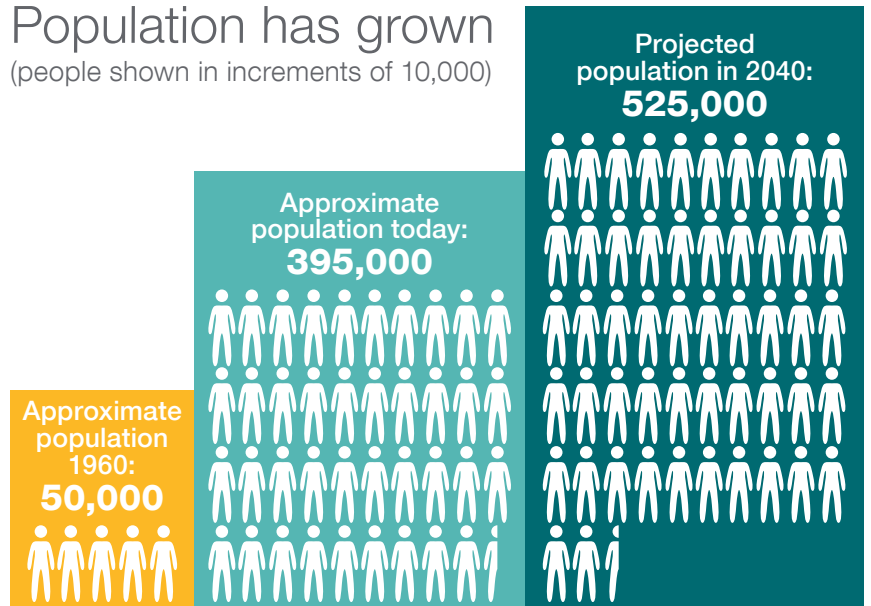
This growth will continue. Projections show the Eastside population will likely grow by another third over the next 25 years.

Changing household energy use

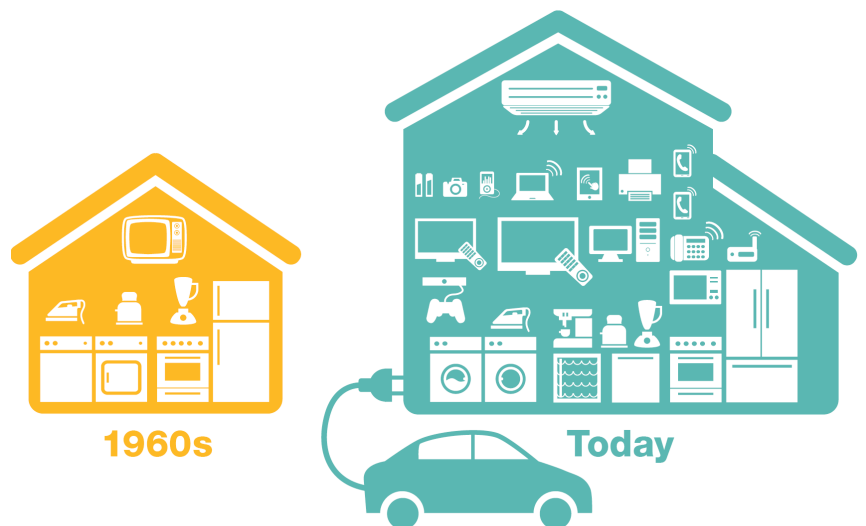
Not only have our communities grown and prospered, but the way we use electricity has changed as well. Eastside homes today are larger than those built in the 1960s, requiring more energy for lighting, heating, and air conditioning. We also plug in many devices today that didn't exist years ago.

Population has grown

(people shown in increments of 10,000)



Puget Sound Regional Council 2013 Land Use Baseline: Maintenance Release 1 (MR1), update April 2014.



Keeping the economy strong

The Eastside is growing faster than any other region in Washington. World-class businesses are moving in and job growth is on the upswing – employment is expected to grow more than 70 percent by 2040.

However, the Eastside's electric grid, with its last major upgrade in the 1960s, can't reliably accommodate the 21st-century technology companies, emergency services and fast-growing communities that depend on it today.

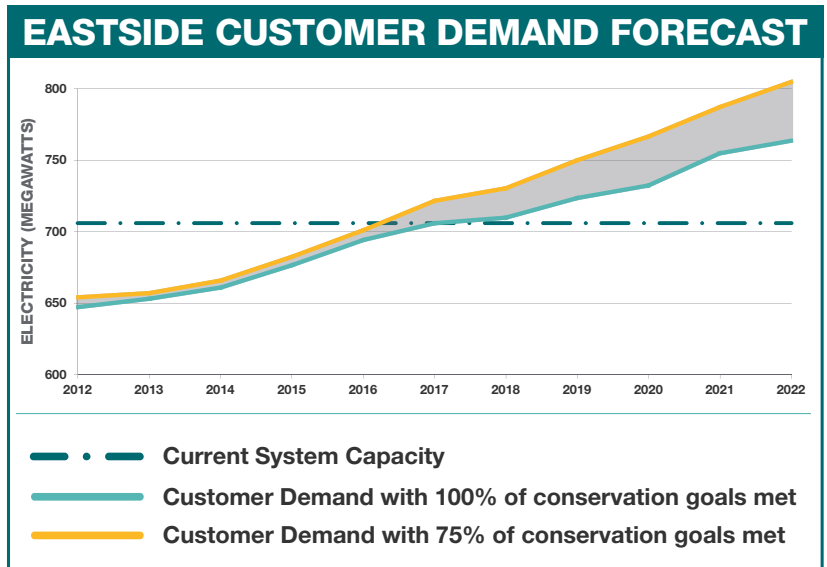
Conservation programs are successful, but not enough

Together, over the past 30 years, we've taken steps to get the most out of the system. Through upgraded lighting, appliances and equipment, increased weatherization, and energy-efficient building technologies, PSE customers helped save enough electricity to power 30,000 homes in 2012.

Even with PSE customers meeting 100 percent of their conservation goals, growth studies project demand for reliable power will exceed capacity as early as the winter of 2017/2018. This doesn't mean the lights will go out, but **without substantial upgrades and continued conservation, we risk more disruptive and longer outages.**

“ A robust electric system is fundamental to continuing our economic development success in King County. We know from experience that when reliable infrastructure is in place, businesses will make substantial contributions in terms of economic growth, employment, trade competitiveness, environmental sustainability, public safety and improving the overall quality of life for all our residents in the Puget Sound area. ”

– Suzanne Dale Estey,
Economic Development Council
of Seattle and King County



To protect our future, PSE is working with Eastside communities on a safe, reliable solution

In 2013, after a year of researching possible solutions, PSE and independent experts determined that a new substation and new 230 kV transmission lines are the only way to reliably meet the Eastside's growing needs.



New 230 kV
substation and
transformer



A new high capacity
transmission line



Continued
conservation



Energize Eastside
Dependable power
for years to come

2014 year in review

Thank you to our customers

We want to sincerely thank Eastside customers for your interest and involvement in the Energize Eastside project over the past 12 months. To everyone who has taken the time to learn about the project, submit comments and questions, attend meetings or speak with our project staff, we want you to know that your input is invaluable. We understand there is no location for new transmission lines that won't bring changes to the surrounding area, so we appreciate your contribution to what we know is a difficult conversation.

We hope you continue to stay involved and informed. Your feedback is important.

Sincere thanks,

Leann Kostek

Senior Project Manager

Gretchen Aliabadi

Communications Manager

Community Advisory Group

PSE met regularly with the Energize Eastside Community Advisory Group since January 2014 to consider community values and evaluate route options. At their final meeting on Dec. 10, the Community Advisory Group selected two route options as their final route recommendation for PSE's consideration: Oak and Willow.

COMMUNITY ADVISORY GROUP ROUTE RECOMMENDATION



See the interactive map at pse.com/energizeeastside for details

PSE IN YOUR COMMUNITY



More than **240** briefings with individuals, neighborhoods, cities and other stakeholder groups

6 public open houses at key project milestones



More than **60** community events

2 online open houses

1 webinar on undergrounding and electric and magnetic fields



Traveling kiosk at **5** locations displaying project updates



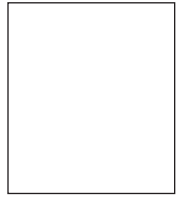
2,300 comments and questions. View monthly summaries of common questions and answers in our project library at pse.com/energizeeastside

Q&A

2 question and answer community meetings

Of the 22 advisory group members and four residential association alternates participating in the recommendation discussion, 20 supported the final recommendation. View the Community Advisory Group's Final Report on our project website.

Puget Sound Energy, P.O. Box 97034, Bellevue, WA 98009-9734



Energize Eastside 2015 project update

CONTACT:

- Leann Kostek, Senior Project Manager
- Gretchen Aliabadi, Communications Manager
- Jackson Taylor, Community Projects Manager
- Keri Pravitz, Community Projects Manager

EMAIL: energizeeastside@pse.com

VOICEMAIL: 1-800-548-2614

WEBSITE: pse.com/energizeeastside

Next steps in 2015



Make an announcement about routing that balances the needs of customers, the local community, property owners and PSE.



Work directly with property owners and tenants to begin detailed fieldwork to inform environmental review, design and permitting.



Ask for community input on project design, which may include pole height, finish and other design considerations.



Work with the City of Bellevue and other affected jurisdictions and agencies on the project's Environmental Impact Statement (EIS) process.

STAY INVOLVED!

Your feedback is important. Learn how to stay involved and send questions and comments any time:



pse.com/energizeeastside



1-800-548-2614



energizeeastside@pse.com