



energizeEASTSIDE

fact sheet

Puget Sound Energy's (PSE) Energize Eastside project will build a new substation and upgrade approximately 16 miles of existing transmission lines from Redmond to Renton. Combined with continued aggressive electric conservation efforts, Energize Eastside will keep the lights on and foster economic development in our Eastside communities for years to come.

The Eastside has grown and it's time for our infrastructure to catch up

PSE's last major upgrade to the backbone of the Eastside's electric grid was in the 1960s. Since then, the Eastside's population has grown eight-fold and our economy relies on power in ways it did not 50 years ago.

Our customers have also learned to conserve energy and be increasingly more energy efficient. But it's not enough.

Now is the time to upgrade

Studies project that growth on the Eastside could cause demand for electricity to exceed the capacity of the backbone of the Eastside's transmission system.

Federal regulations require PSE to have sufficient infrastructure to meet foreseeable demand requirements or use corrective action plans that includes intentional load shedding (commonly referred to as rolling blackouts). Our studies show that if no action is taken to upgrade the backbone of the Eastside's transmission system, PSE may have to utilize additional corrective action plans that plan for intentional load shedding to meet federal requirements. This could affect more than 130,000 customers as early as the summer of 2018, at a cost of tens of millions of dollars to the local economy.

Energize Eastside solves the Eastside's electrical problem

PSE studied multiple solutions to address the Eastside's electrical needs. The most reliable and cost-effective solution is Energize Eastside: a combination of continued, aggressive conservation efforts and building new infrastructure - specifically, upgrading existing transmission lines and building a new substation.

The new substation, powered by the upgraded transmission lines, will provide additional capacity to ensure the local electric system can accommodate our customers' growing demand.

PSE will replace the poles in the existing corridor

After nearly four years of study and extensive dialogue with the community, PSE selected the existing corridor as the final route for the project. Using the existing corridor is safe and minimizes impacts to the environment.

Energize Eastside project route



After evaluating multiple routes, PSE selected the existing corridor as the final route for the project.

Our plan is to upgrade the existing wooden poles to steel poles, replacing four existing poles with one or two new poles, depending on location. In general, new poles will be in about the same or similar location as the existing poles. Typical pole design options range from 70 feet to 100 feet above ground. Some poles may need to be taller than 100 feet in certain locations, such as when crossing a highway.

PSE is committed to building and operating the project safely

Safety is our top priority, and is critical to Energize Eastside's design, construction and operations.

Energize Eastside and Olympic Pipe Line Company's (Olympic) underground pipelines can safely co-exist, just as the existing lines and pipelines have done for decades. We continue to partner with Olympic to plan and implement safe construction practices that protect the pipelines and nearby neighborhoods.

We're working with property owners

We are working with property owners to develop property-specific landscaping and tree replacement plans

for Energize Eastside. We know our customers value trees. By using the existing corridor for Energize Eastside, we will limit impacts to trees. Our goal is for there to be more trees when the project is complete, not fewer.

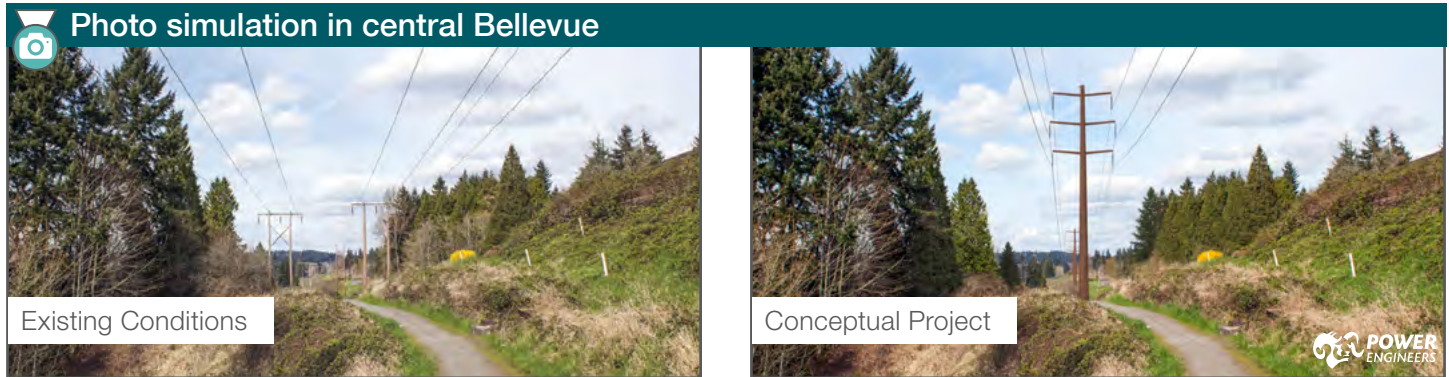
Next steps

- After years of environmental review, the project is currently in the permitting process.
- We'll begin construction once we have the necessary permits.
- We'll continue reaching out to property owners along the existing corridor and keeping the community up to date.

Staying involved

To learn more about the project, view photo simulations of the upgraded transmission lines, and read the latest news, visit pse.com/energizeeastside.

For more information about the Partner Cities' Environmental Impact Statement, visit EnergizeEastsideEIS.org.



Visit pse.com/energizeeastside to view additional photo simulations.

Thank you for your interest in Energize Eastside.

pse.com/energizeeastside

1-800-548-2614

energizeeastside@pse.com

pse.com/energizeeastside

