

# Vegetation Management Standards

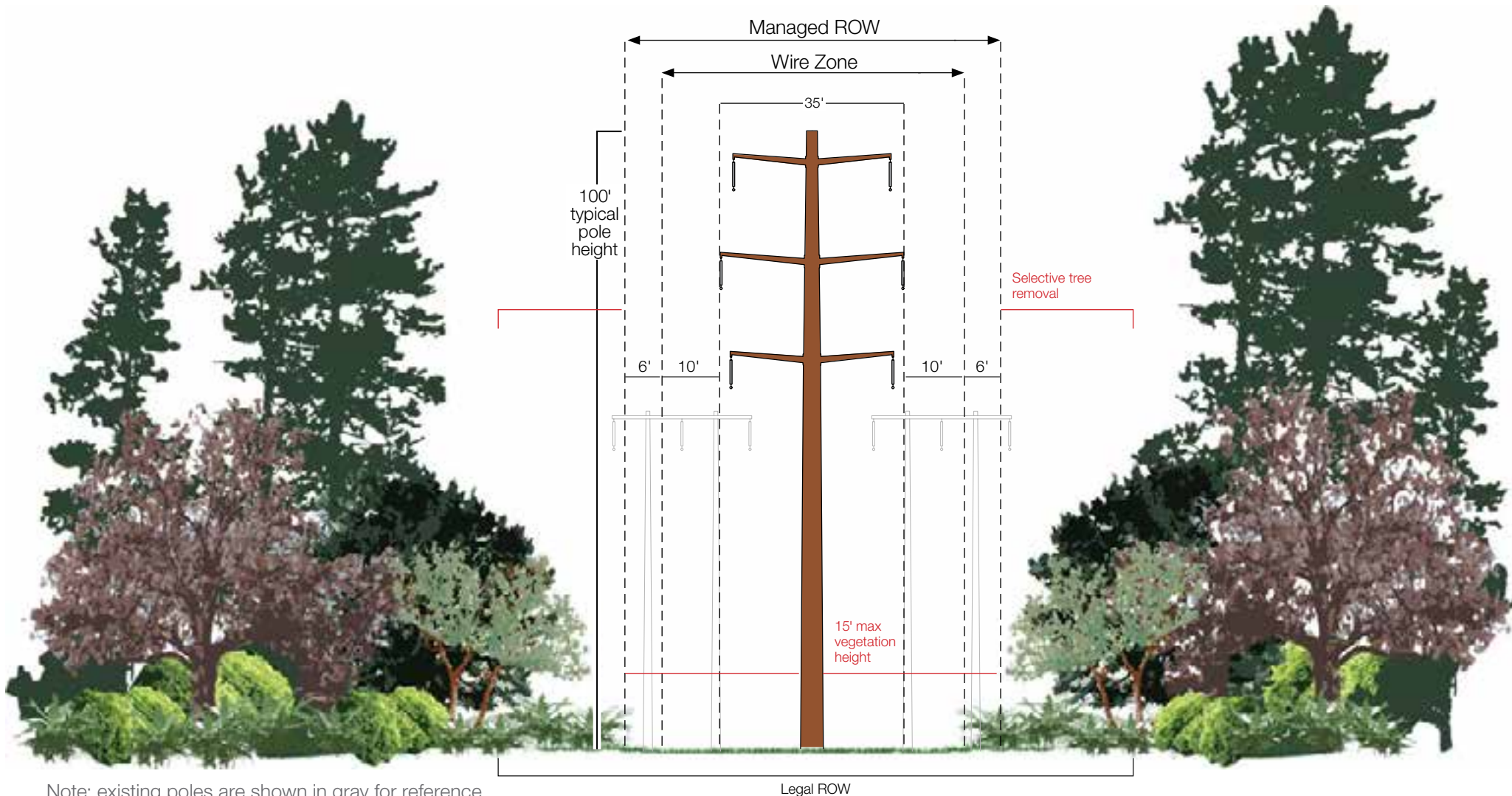
230 kV transmission lines

PSE's 230 kV transmission vegetation management standards generally requires removing trees located in the wire zone that have a mature height of more than 15 feet.

**Wire Zone:** Section of a utility transmission right of way extending to 10 feet from the outside transmission wire(s). Vegetation with a mature height of 15 feet or less is allowed in this zone.

**Managed Right of Way (ROW):** The section of a transmission right of way that extends roughly 16 feet from the outside transmission wire(s). Vegetation with a mature height of 15 feet or less is allowed in this zone.

**Legal Right of Way (ROW):** The full width of the easement. Maximum height of mature vegetation between the Managed ROW and Legal ROW is dependent upon tree species, tree health, and distance from the wires.



Note: existing poles are shown in gray for reference.

# Vegetation Management Standards

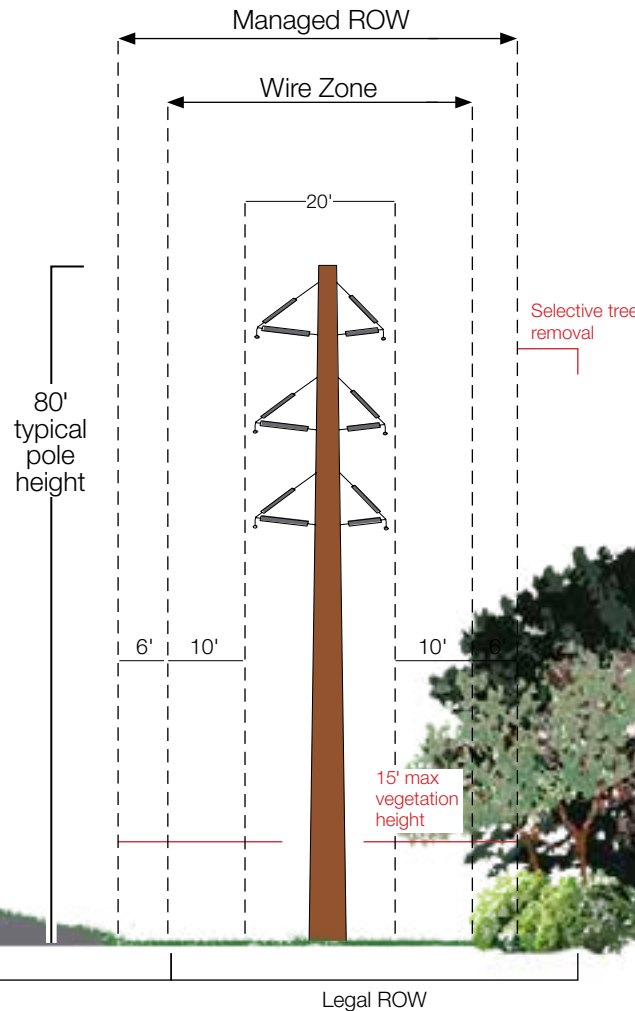
230 kV transmission lines

PSE's 230 kV transmission vegetation management standards generally requires removing trees located in the wire zone that have a mature height of more than 15 feet.

**Wire Zone:** Section of a utility transmission right of way extending to 10 feet from the outside transmission wire(s). Vegetation with a mature height of 15 feet or less is allowed in this zone.

**Managed Right of Way (ROW):** The section of a transmission right of way that extends roughly 16 feet from the outside transmission wire(s). Vegetation with a mature height of 15 feet or less is allowed in this zone.

**Legal Right of Way (ROW):** The full width of the easement. Maximum height of mature vegetation between the Managed ROW and Legal ROW is dependent upon tree species, tree health, and distance from the wires.



# Vegetation Management Standards

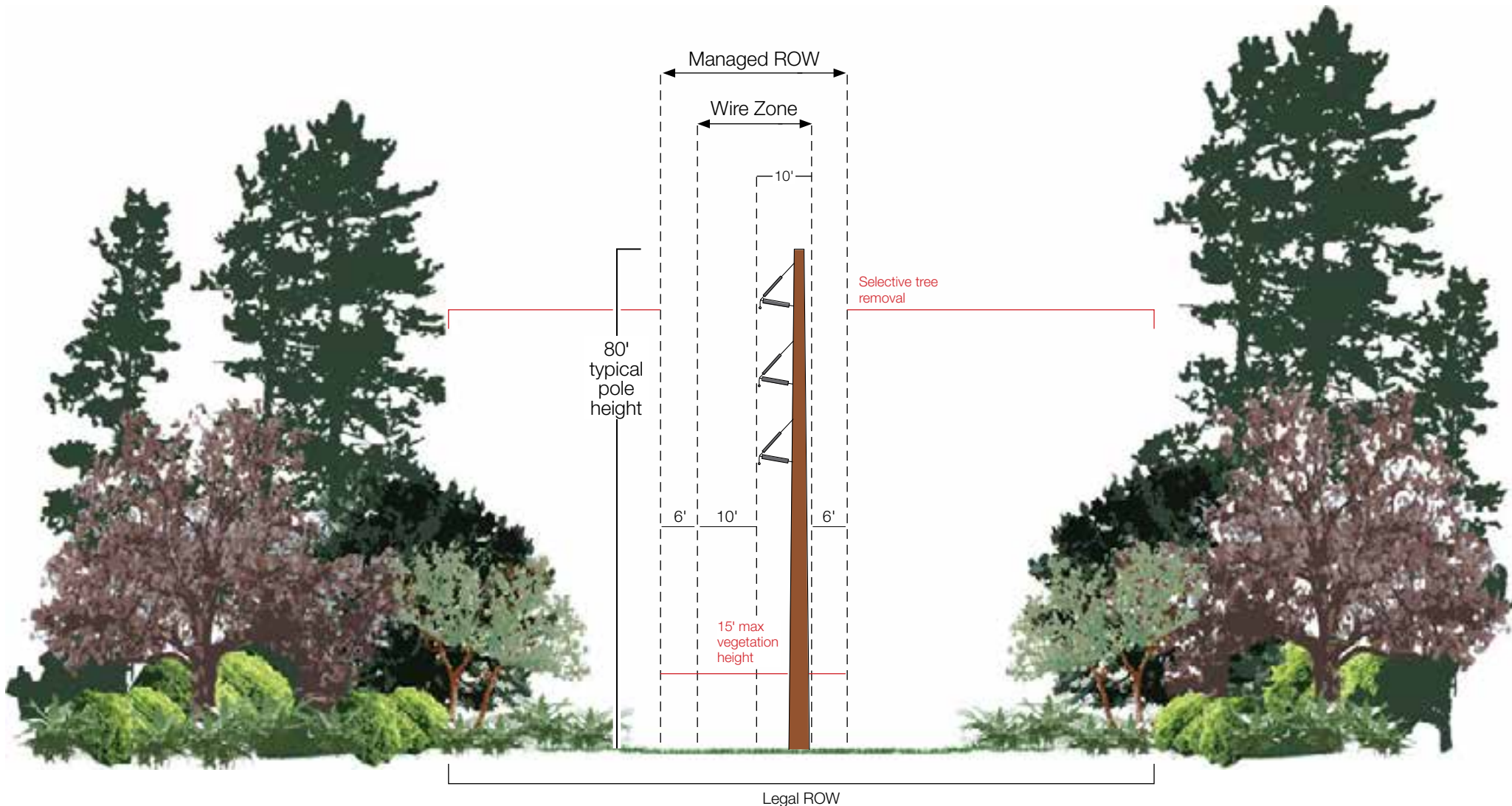
230 kV transmission lines

PSE's 230 kV transmission vegetation management standards generally requires removing trees located in the wire zone that have a mature height of more than 15 feet.

**Wire Zone:** Section of a utility transmission right of way extending to 10 feet from the outside transmission wire(s). Vegetation with a mature height of 15 feet or less is allowed in this zone.

**Managed Right of Way (ROW):** The section of a transmission right of way that extends roughly 16 feet from the outside transmission wire(s). Vegetation with a mature height of 15 feet or less is allowed in this zone.

**Legal Right of Way (ROW):** The full width of the easement. Maximum height of mature vegetation between the Managed ROW and Legal ROW is dependent upon tree species, tree health, and distance from the wires.



# Vegetation Management Standards

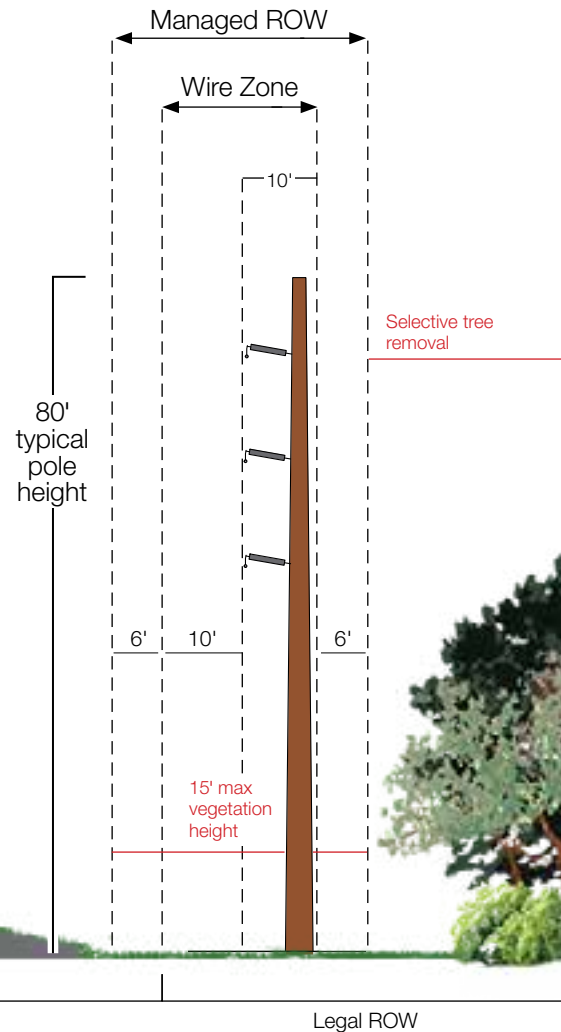
230 kV transmission lines

PSE's 230 kV transmission vegetation management standards generally requires removing trees located in the wire zone that have a mature height of more than 15 feet.

**Wire Zone:** Section of a utility transmission right of way extending to 10 feet from the outside transmission wire(s). Vegetation with a mature height of 15 feet or less is allowed in this zone.

**Managed Right of Way (ROW):** The section of a transmission right of way that extends roughly 16 feet from the outside transmission wire(s). Vegetation with a mature height of 15 feet or less is allowed in this zone.

**Legal Right of Way (ROW):** The full width of the easement. Maximum height of mature vegetation between the Managed ROW and Legal ROW is dependent upon tree species, tree health, and distance from the wires.



# Vegetation Management Standards

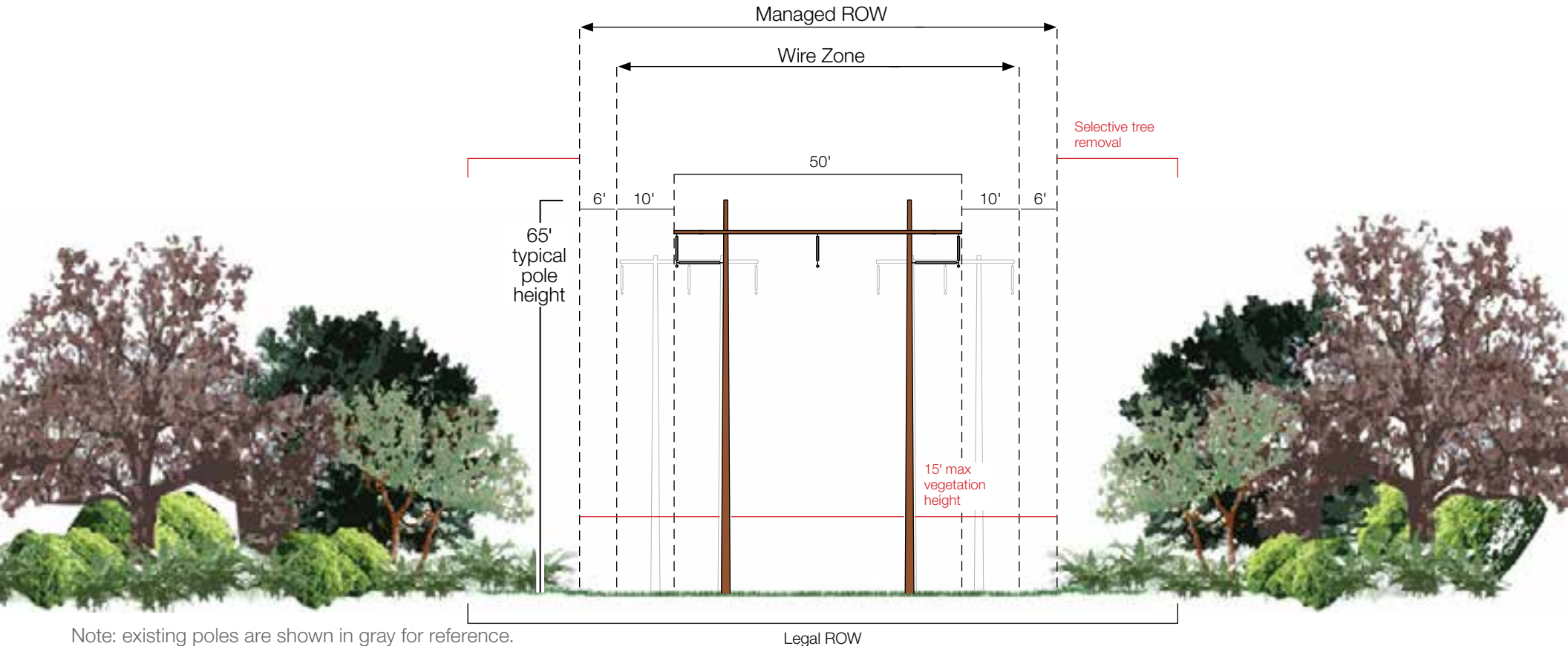
230 kV transmission lines

PSE's 230 kV transmission vegetation management standards generally requires removing trees located in the wire zone that have a mature height of more than 15 feet.

**Wire Zone:** Section of a utility transmission right of way extending to 10 feet from the outside transmission wire(s). Vegetation with a mature height of 15 feet or less is allowed in this zone.

**Managed Right of Way (ROW):** The section of a transmission right of way that extends roughly 16 feet from the outside transmission wire(s). Vegetation with a mature height of 15 feet or less is allowed in this zone.

**Legal Right of Way (ROW):** The full width of the easement. Maximum height of mature vegetation between the Managed ROW and Legal ROW is dependent upon tree species, tree health, and distance from the wires.



Note: existing poles are shown in gray for reference.

Legal ROW

# Vegetation Management Standards

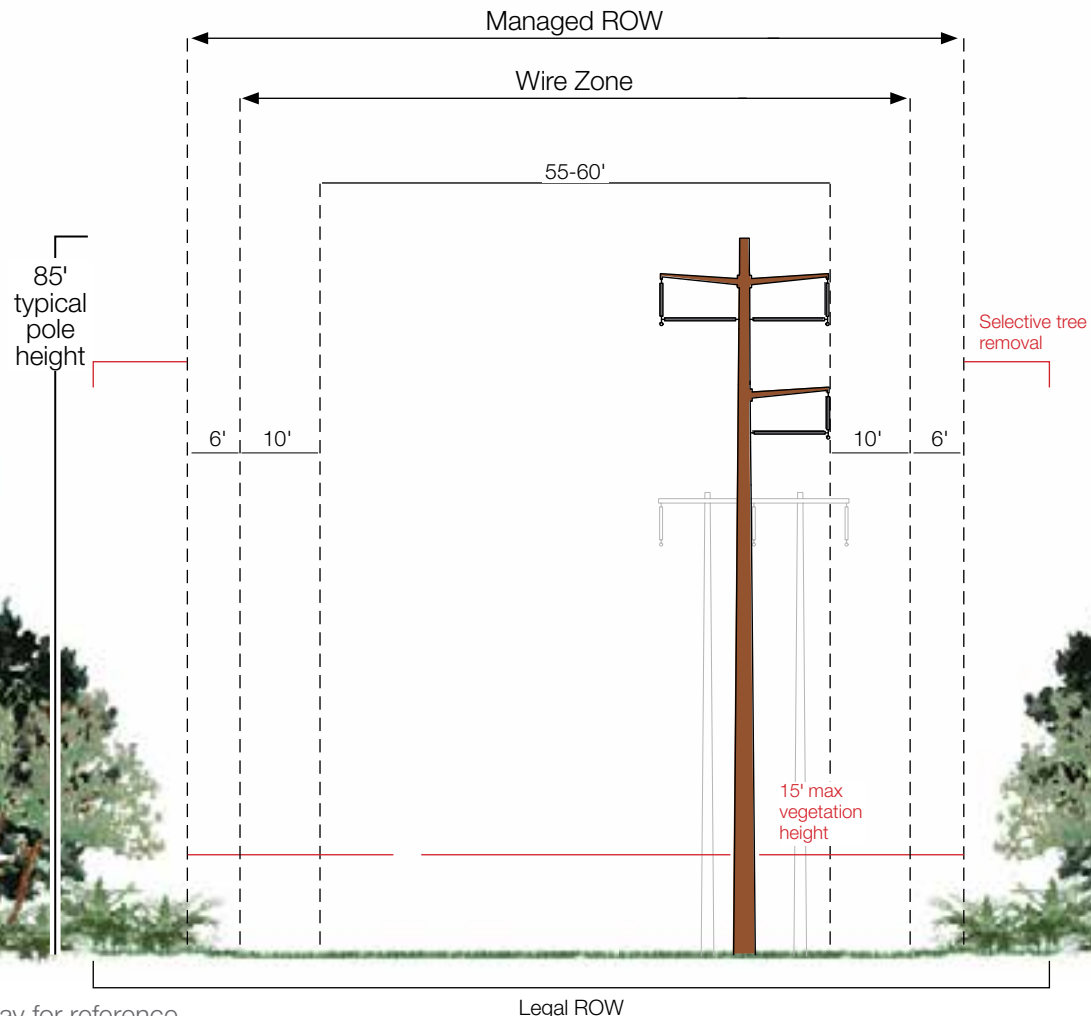
230 kV transmission lines

PSE's 230 kV transmission vegetation management standards generally requires removing trees located in the wire zone that have a mature height of more than 15 feet.

**Wire Zone:** Section of a utility transmission right of way extending to 10 feet from the outside transmission wire(s). Vegetation with a mature height of 15 feet or less is allowed in this zone.

**Managed Right of Way (ROW):** The section of a transmission right of way that extends roughly 16 feet from the outside transmission wire(s). Vegetation with a mature height of 15 feet or less is allowed in this zone.

**Legal Right of Way (ROW):** The full width of the easement. Maximum height of mature vegetation between the Managed ROW and Legal ROW is dependent upon tree species, tree health, and distance from the wires.



Note: existing poles are shown in gray for reference.